





58 Wedge Tail Drive Winter Valley VIC

4  2  2 

This splendid four bedroom home offers an unparalleled opportunity for those seeking an elegant fusion of classic charm and contemporary finesse. Expertly designed to maximise space, the open plan hub provides a modern functional living space harmoniously integrating the outdoor alfresco entertaining area, perfect for hosting gatherings or enjoying relaxing with the family. This warm welcoming and beautifully natural light filled home is conveniently situated close to Delacombe Town Centre, schools and childcare, just minutes to CBD, a perfectly located immaculate property for families, upsizers or investors.

The simple yet stunning architectural entry and lovely landscaped front yard sets the tone for low maintenance living, this home caters for family friendly functionality

[For full version visit the website](https://www.doepels.com.au)

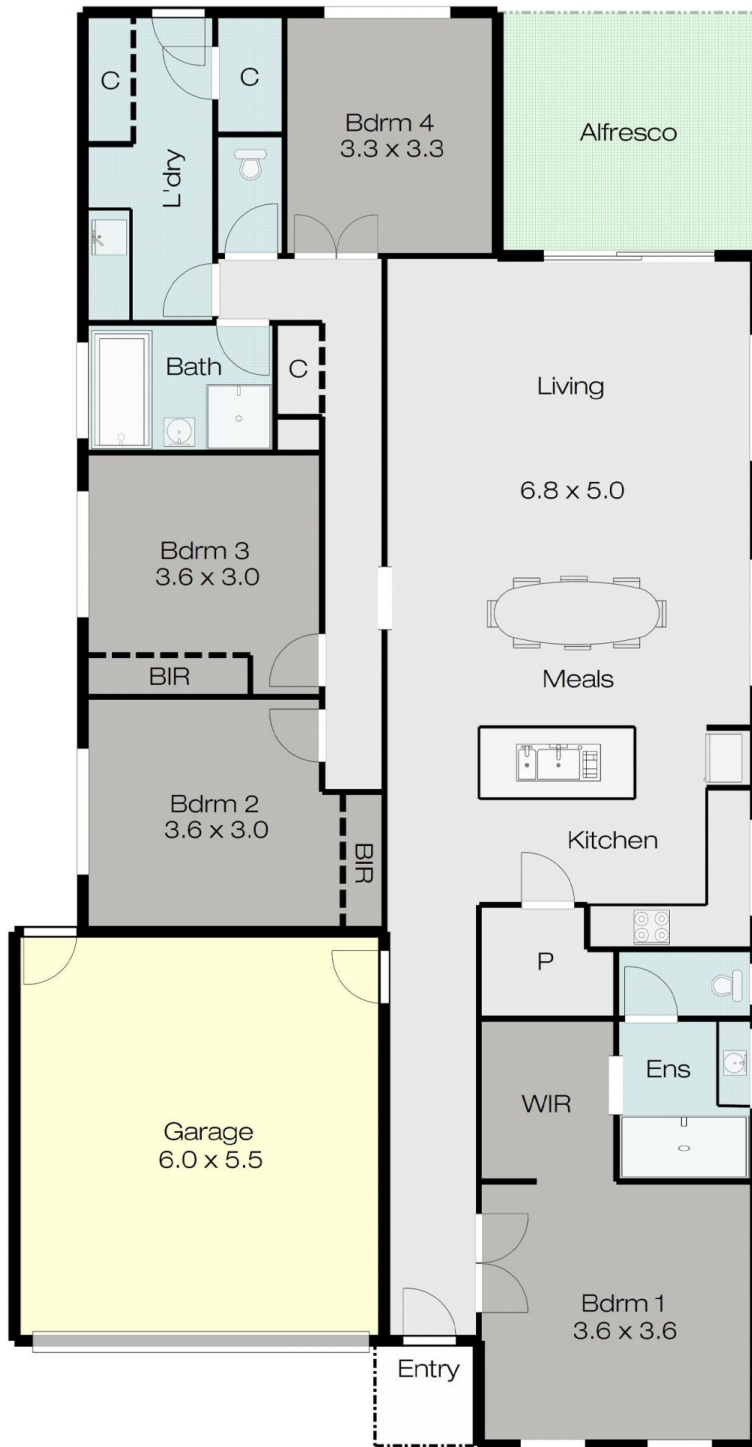
Type : House

Price : \$ 550,000

View : <https://www.doepels.com.au/sale/vic/ballarat-western-district/winter-valley/residential/house/8140526>



Leigh Hutchinson
03 5331 2000



DISCLAIMER:

ALL DIMENSIONS ARE APPROXIMATE & NOT 100% TO SCALE.
FOR FURTHER INFORMATION, PLEASE CONTACT YOUR AGENT DIRECTLY.

