



5/309 Joseph Street Canadian VIC

2 2 1

Immaculately presented two bedroom unit in great location close to Lake Esmond park and all the amenities the Sovereign Hill side of Canadian has to offer and only minutes to the CBD. Well presented throughout this Unit will suit first home buyers, downsizers or make a dream investment property.

Cleverly designed to maximise space the open plan living hub fills with natural light and incorporates the kitchen, dining and living zones and seamlessly connects out to a low maintenance courtyard and landscaped garden area. The kitchen has been thoughtfully designed with plenty of bench space and room to move around the island/breakfast bench, a large pantry and stainless steel appliances. With two bedrooms, both ample sizes, the main has a bright and

Type : Unit
Price : \$ 405,000
View : <https://www.doepels.com.au/sale/vic/ballarat-western-district/canadian/residential/unit/8054227>



Leigh Hutchinson
03 5331 2000



Robert Cunningham
03 5337 0040

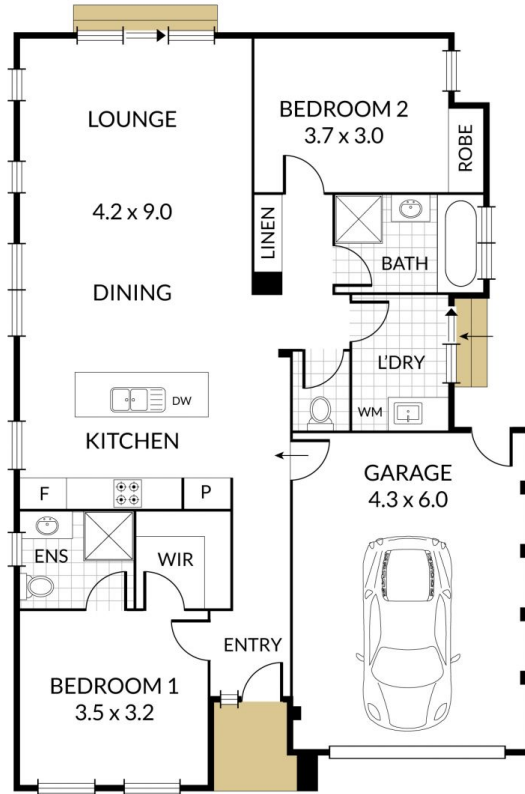
[For full version visit the website](https://www.doepels.com.au)

Internal 130m² External 2m² Total 132m²

Unit 5/309 Joseph Street, **Canadian**



2 x 2 x 1 x



**Doepel
Lilley +
Taylor**
Real Estate. Est. 1888

NOTE: Every precaution has been taken to verify the accuracy of the above details. However, prospective purchasers are advised to make their own enquiries.