






3 Doherty Close Mount Clear VIC

3  2  2 

Welcome to your ideal family home, this stunning 3 bedroom home offers the essence of modern living nestled in a tranquil setting and thoughtfully positioned to enhance the modern architecturally appealing façade for ultimate privacy encased by landscaped gardens. Surrounded by local playgrounds, reserves and parks including walking trails and a BMX track all within walking distance offering endless opportunities for adventure, plus enjoy the convenience being close to shops, schools, childcare and just a short drive to the Ballarat town centre.

Step inside the wide entry foyer to discover the versatile living and entertaining hub of the home, an expansive open-plan kitchen, dining and living zone blending style and functionality that seamlessly connects to the inviting outdoor alfresco area, perfect for family and social gatherings or pure relaxation. A natural light filled abode

Price : \$ 559,000
Land Size : 535 sqm
View : <https://www.doepels.com.au/sale/vic/ballarat-western-district/mount-clear/residential/home/7958779>



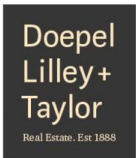
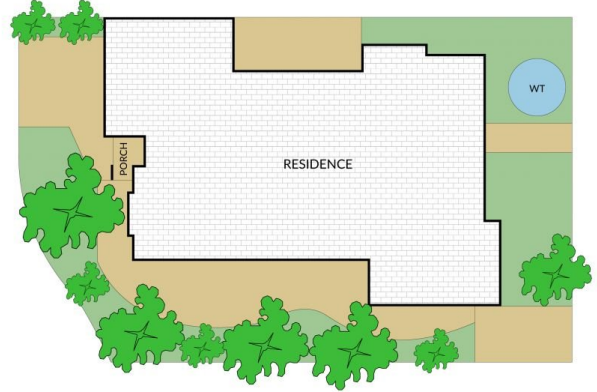
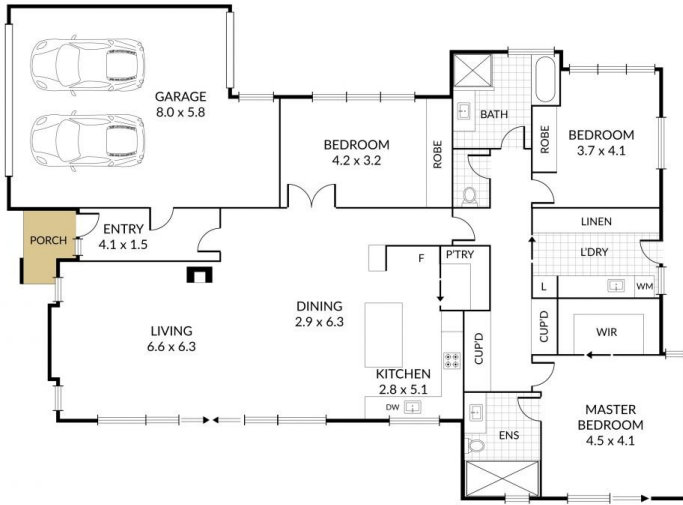
Matthew Tunbridge
03 5331 2000

Internal 213m² External 322m² Total 535m²

3 Doherty Close, Mount Clear



3 x 2 x 2 x



NOTE: Every precaution has been taken to verify the accuracy of the above details. However, prospective purchasers are advised to make their own enquiries.