






1 Sainsbury Court Mount Clear VIC

3  2  2 

Great family location close to Midvale Shopping centre, primary and secondary schools, kindergarten, and enroute to Federation Uni and technology centre. Handy corner block with garden privacy, large living areas, 3 spacious bedrooms with walk in robe and semi ensuite to the main, gas appliances including ducted heating, double carport and garden shed. A must-see property with scope to add your own touch at a realistic and affordable price.

Price : \$ 420,000

Land Size : 702 sqm

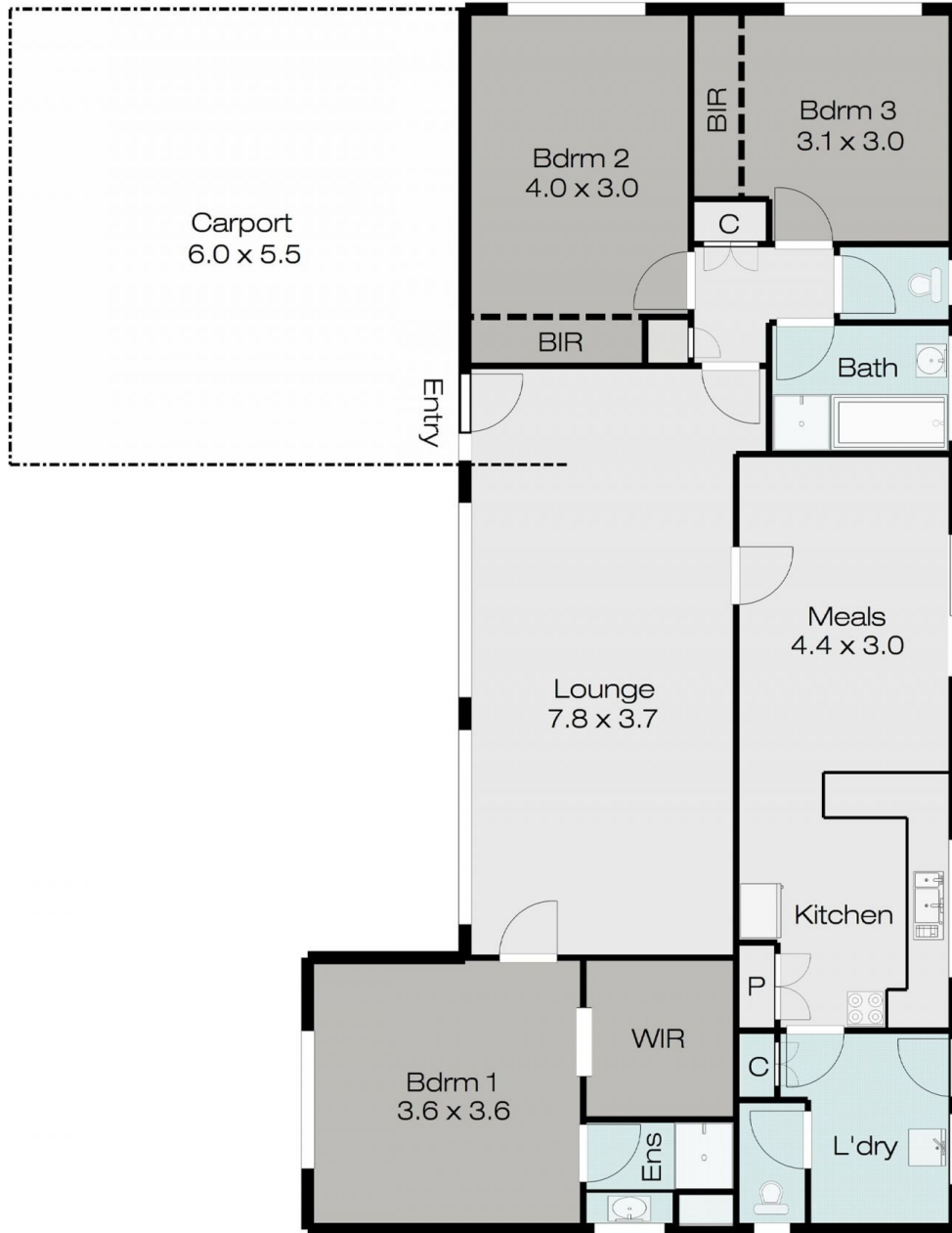
View : <https://www.doepels.com.au/sale/vic/ballarat-western-district/mount-clear/residential/home/7902063>



Matthew Tunbridge
03 5331 2000



John Morris
03 5331 2000



DISCLAIMER:

ALL DIMENSIONS ARE APPROXIMATE & NOT 100% TO SCALE.
FOR FURTHER INFORMATION, PLEASE CONTACT YOUR AGENT DIRECTLY.

