






1/29 King George Way Mitchell Park VIC

3  2  2 

A beautifully presented three bedroom house with street front appeal, perfect for buyers seeking a low maintenance and tranquil lifestyle. Flawlessly maintained inside and out and offering convenient and enviable living close to local schools, shops and transport.

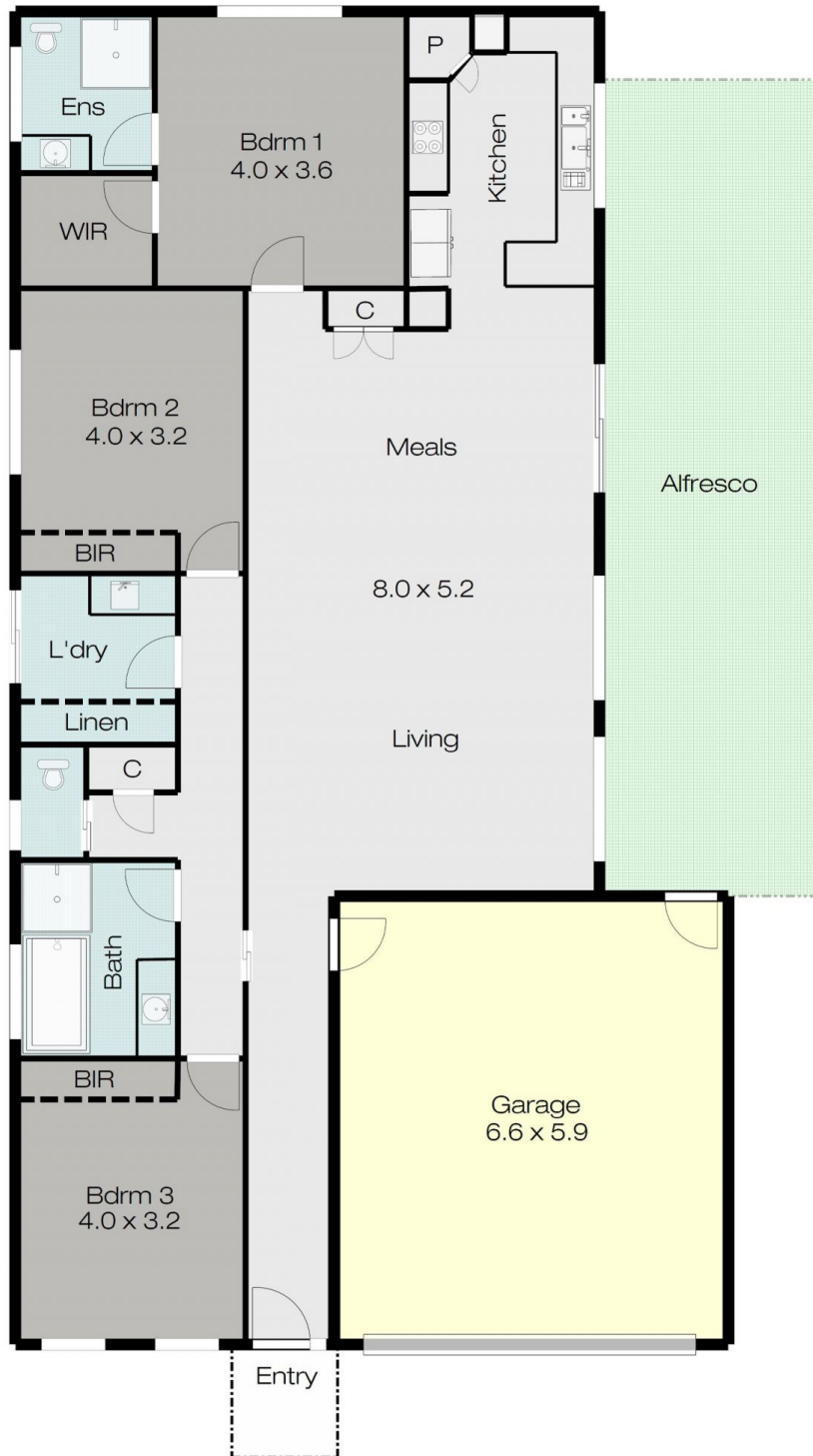
You will be pleasantly greeted by the spacious and light filled open plan living zone, highlighted throughout by a lovely neutral colour palette and stunning window furnishings. The kitchen is complete with large pantry, Westinghouse appliances including electric oven, gas cooktop, dishwasher and large fridge space.

Other comfort features include central heating and evaporative cooling, good sized master bedroom with ensuite and walk in robe, remaining two bedrooms with fitted robes and XL linen cupboard to laundry. Relax from

**Price** : \$ 465,000  
**Land Size** : 427 sqm  
**View** : <https://www.doepels.com.au/sale/vic/ballarat-western-district/mitchell-park/residential/home/7834761>



**Leigh Hutchinson**  
03 5331 2000



DISCLAIMER:

ALL DIMENSIONS ARE APPROXIMATE & NOT 100% TO SCALE.  
FOR FURTHER INFORMATION, PLEASE CONTACT YOUR AGENT DIRECTLY.

