




23 Douglas Close Miners Rest VIC

3  2  3 

You will be impressed with everything this low maintenance home and serene neighborhood has to offer the whole family.

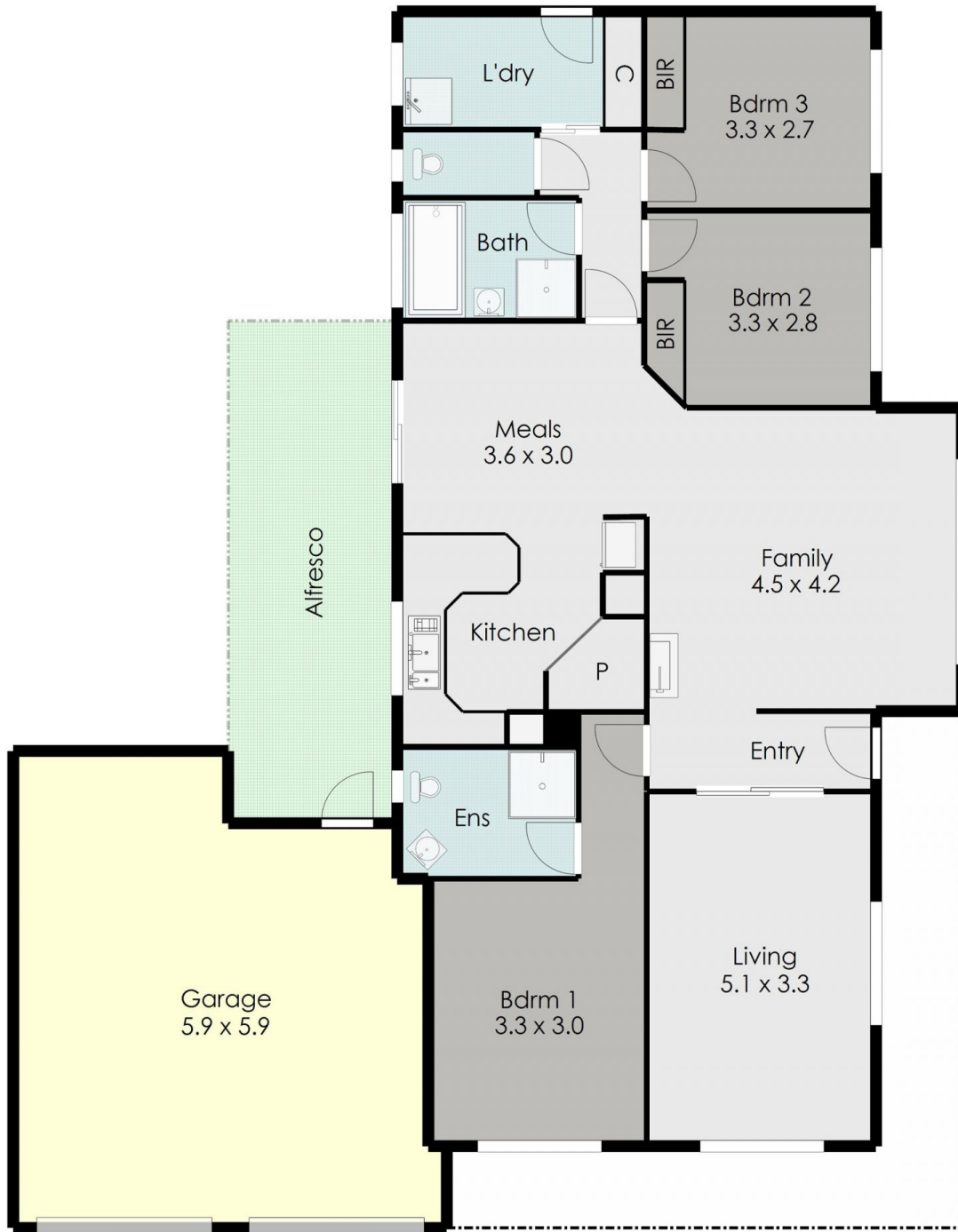
A beautifully presented home situated in a sought after pocket of popular Miners Rest, this corner allotment of 511m² offers side access. Well maintained and modernised, offering 3 bedrooms with low maintenance landscaped gardens in prime position ensuring easy access to all your daily essentials and offers a great start for first home buyers, terrific family home or a perfect low maintenance investment property.

A comfortable floorplan with two light filled living spaces, combined with a harmonious blend of style and functionality presented both inside and out. A seamless flow between the open plan main living hub and the

Price : \$ 470,000
Land Size : 511 sqm
View : <https://www.doepels.com.au/sale/vic/ballarat-western-district/miners-rest/residential/house/7736544>



Leigh Hutchinson
03 5331 2000



DISCLAIMER:

ALL DIMENSIONS ARE APPROXIMATE & NOT 100% TO SCALE.
FOR FURTHER INFORMATION, PLEASE CONTACT YOUR AGENT DIRECTLY.

