



12 Seymour Crescent Soldiers Hill VIC

4 2 3

This gorgeous property is set on a big 1142 SQM (approx.) allotment with a great amount of backyard space to be enjoyed, positioned on a quiet Crescent in a central location with Ballarat train station being only a 5 minute (Approx.) walk and Ballarat CBD being just an additional couple of minutes' walk on top.

Upon entry to this immaculate home, you will be greeted with a beautifully maintained property. Your eyes will be drawn to the central open plan kitchen/meals/living zone. In this zone is the lovely kitchen with gas cooktop, gas oven, dishwasher, coupled with a great corner pantry along with ample cupboard and bench space. Moving through this zone to the rear of this home you will find three generous sized bedrooms with all having built in robes along with the well-appointed centrally located bathroom and separate toilet.

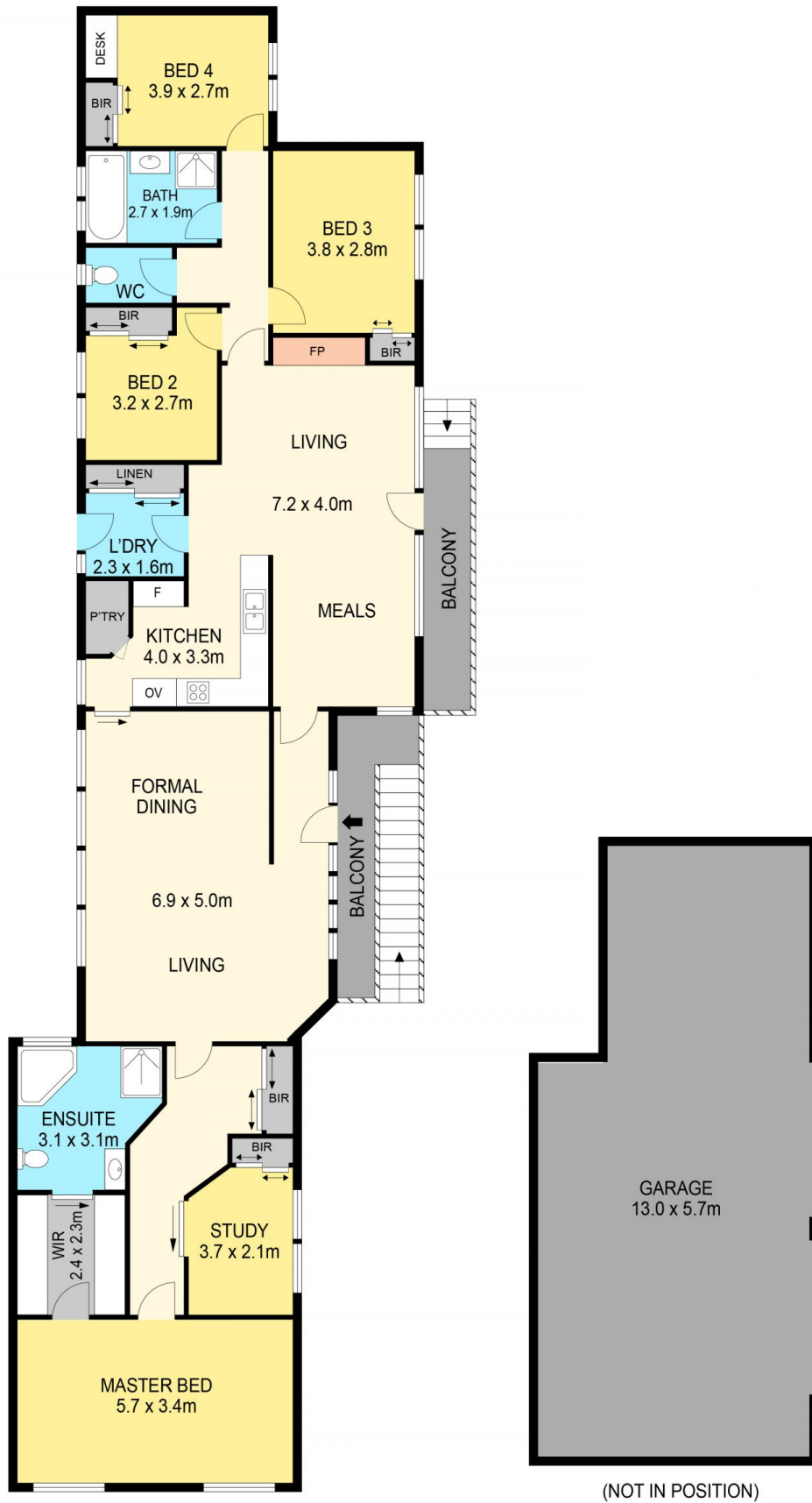
Price : \$795,000 -- \$845,000
Land Size : 1142 sqm
View : <https://www.doepels.com.au/sale/vic/ballarat-western-district/soldiers-hill/residential/house/7729679>



Leigh Hutchinson
03 5331 2000



Robert Cunningham
5337 0040



DISCLAIMER

PLANS SHOWN ARE FOR MARKETING PURPOSES ONLY, ALL DIMENSIONS ARE APPROXIMATE AND NOT TO SCALE. THEY ARE SUBJECT TO ERRORS AND INACCURACIES AND NO LIABILITY WILL BE ACCEPTED. INTERESTED PARTIES SHOULD MAKE THEIR OWN INQUIRES.