



1 Phillip Street Creswick VIC

3  1  2 

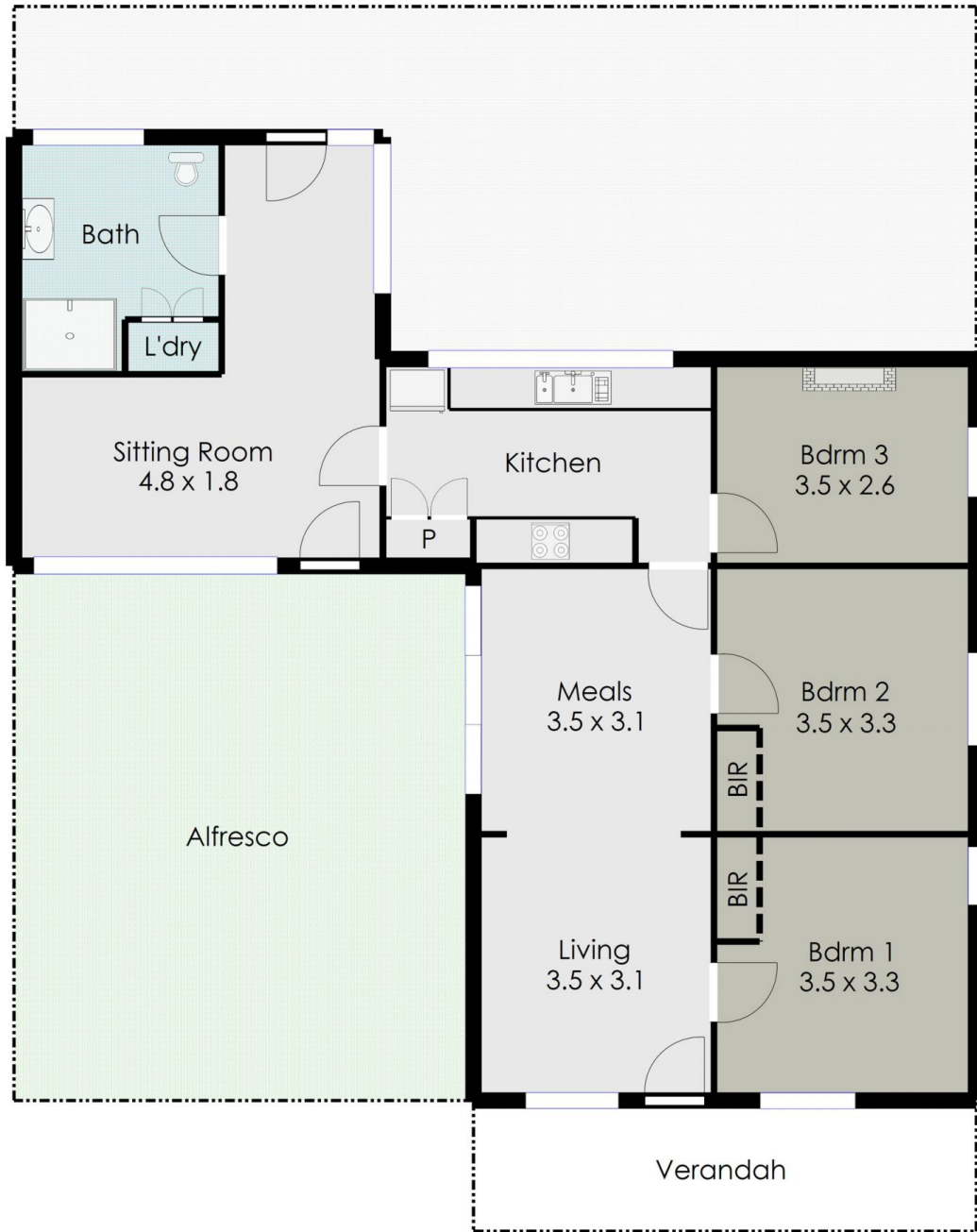
Nestled in a lovely quiet pocket in the township of Creswick, popular for its local shops, cafes, boutiques, IGA supermarket and an array of amenities to cater for everyday living. Ballarat CBD is a short 20 minute drive, with easy access to Melbourne highway and walking distance to V/Line train services to Ballarat and Melbourne for commuters. Picture relaxing on the quaint front verandah, this charming cottage is sure to tug at the heart strings of those looking for a country escape with its original and rustic features, or would suit a potential investment opportunity.

Consisting of 3 good sized bedrooms, with the rear bedroom highlighted by an open fireplace that makes a subtle statement of style and sophistication of a past era. This room also provides a fantastic option of a second living area or study, if desired. Entering through the front

Price : \$ 400,000
Land Size : 511 sqm
View : <https://www.doepels.com.au/sale/vic/ballarat-western-district/creswick/residential/house/7611157>



Matthew Tunbridge
03 5331 2000



DISCLAIMER:

ALL DIMENSIONS ARE APPROXIMATE & NOT 100% TO SCALE.
FOR FURTHER INFORMATION, PLEASE CONTACT YOUR AGENT DIRECTLY.

