



26 Duke Street Newington VIC

4 2 2

This superb 4 bedroom home is the one you've been waiting for! Nestled in a friendly neighbourhood on a low maintenance 372m² block, boasting appealing architectural street presence. An enviable lifestyle on offer in one of Ballarat's most tightly-held pockets, opportunities like this in Newington are rare. This central location will appeal to professionals, families and downsizers alike. Within walking distance to some of Ballarat's finest schools and an easy 20 min stroll to Lake Wendouree and Victoria Park. Immerse yourself in this great location with shopping, restaurants and cafes all a 5 min drive away in the CBD.

Modern design elements enhance the contemporary feel from the front porch to the rear decked patio, take fine living to a whole new level focusing on the seamless indoor-outdoor connection offering blended formal and informal living. Glass stacker doors open via the living zone

Price : \$ 950,000
Land Size : 372 sqm
View : <https://www.doepels.com.au/sale/vic/ballarat-western-district/newington/residential/house/7466548>



Leigh Hutchinson
03 5331 2000



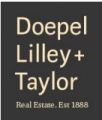
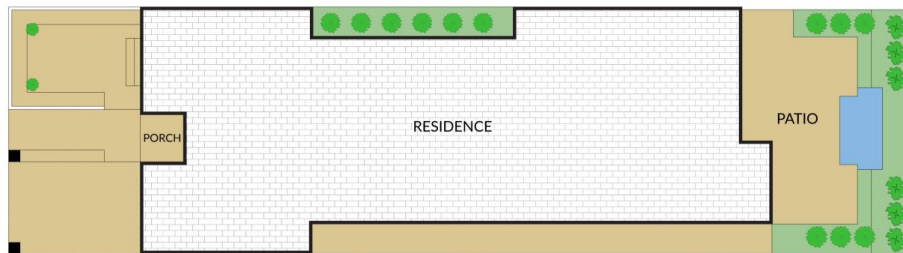
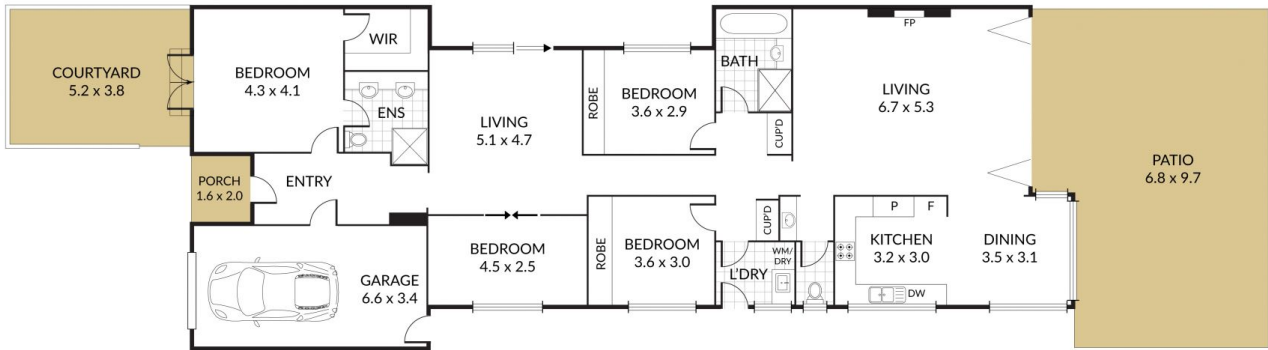
Robert Cunningham
5337 0040

Internal 210m² External 163m² Total 373m²

26 Duke Street, **Newington**



4 x 2 x 1 x



NOTE: Every precaution has been taken to verify the accuracy of the above details. However, prospective purchasers are advised to make their own enquiries.