



### 7 Lemon Street Alfredton VIC

4 2 2

Sure to impress the astute investor requiring an executive style property boasting quality and location. Striking architectural features with modern aesthetic touches throughout make this home also ideal for families, and couples.

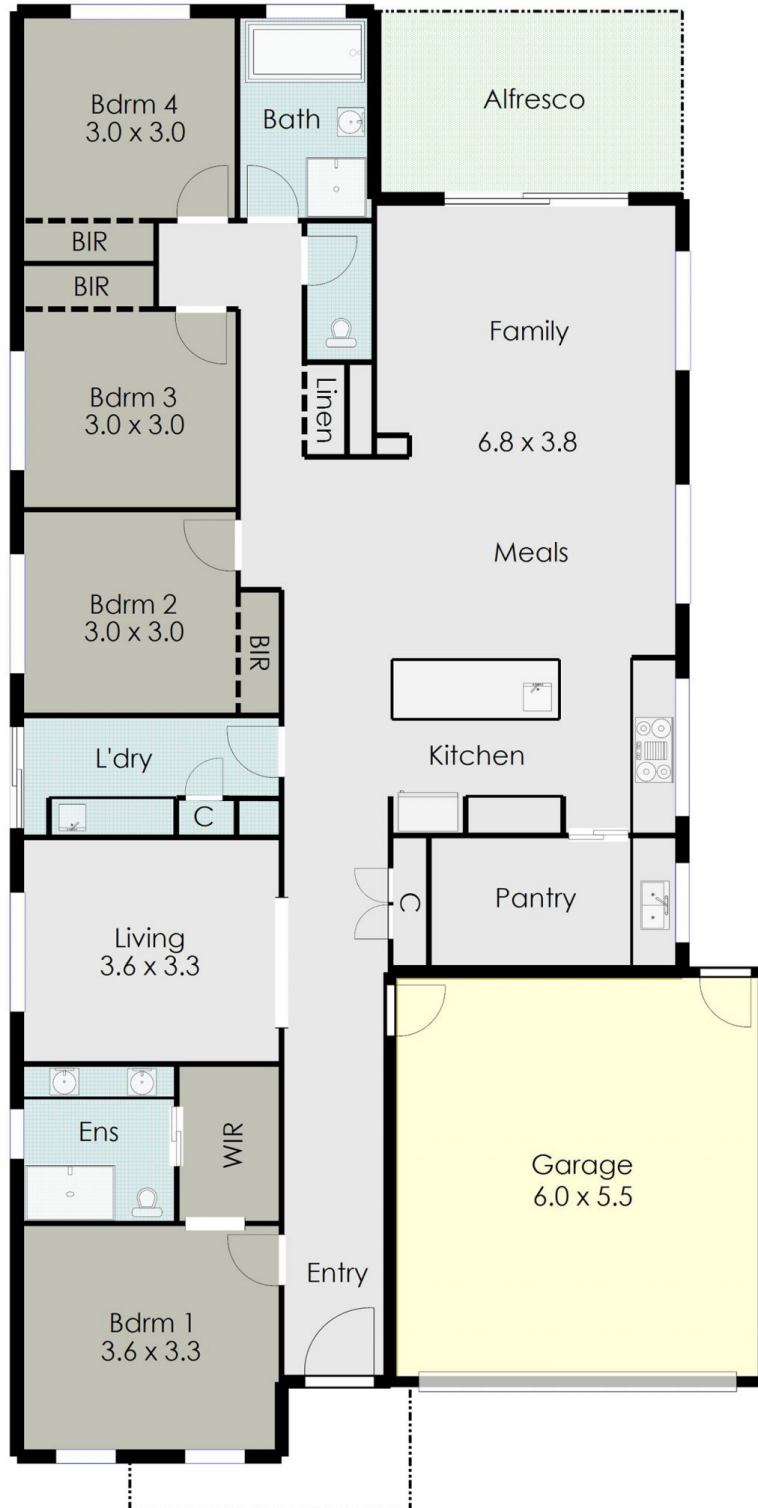
24sqm offering convenient living only a stone's throw from all amenities Alfredton has to offer. Set on 376m2 in new Allara Estate situated close to child care centres, private and public schools, Medical facilities, parks and playgrounds and just minutes to Lucas shopping complex and Ballarat CBD.

The open plan living zone seamlessly connects to a sleek, contemporary and light filled central kitchen a great space to host family and friends, and is complete with stainless steel appliances, pendant lighting, large butler's pantry and

**Price** : \$590,000-\$610,000  
**Land Size** : 376 sqm  
**View** : <https://www.doepels.com.au/sale/vic/ballarat-western-district/alfredton/residential/house/7306232>



**Leigh Hutchinson**  
03 5331 2000



DISCLAIMER:

ALL DIMENSIONS ARE APPROXIMATE & NOT 100% TO SCALE.  
FOR FURTHER INFORMATION, PLEASE CONTACT YOUR AGENT DIRECTLY.

