



80 Panaia Boulevard Truganina VIC

4 2 2

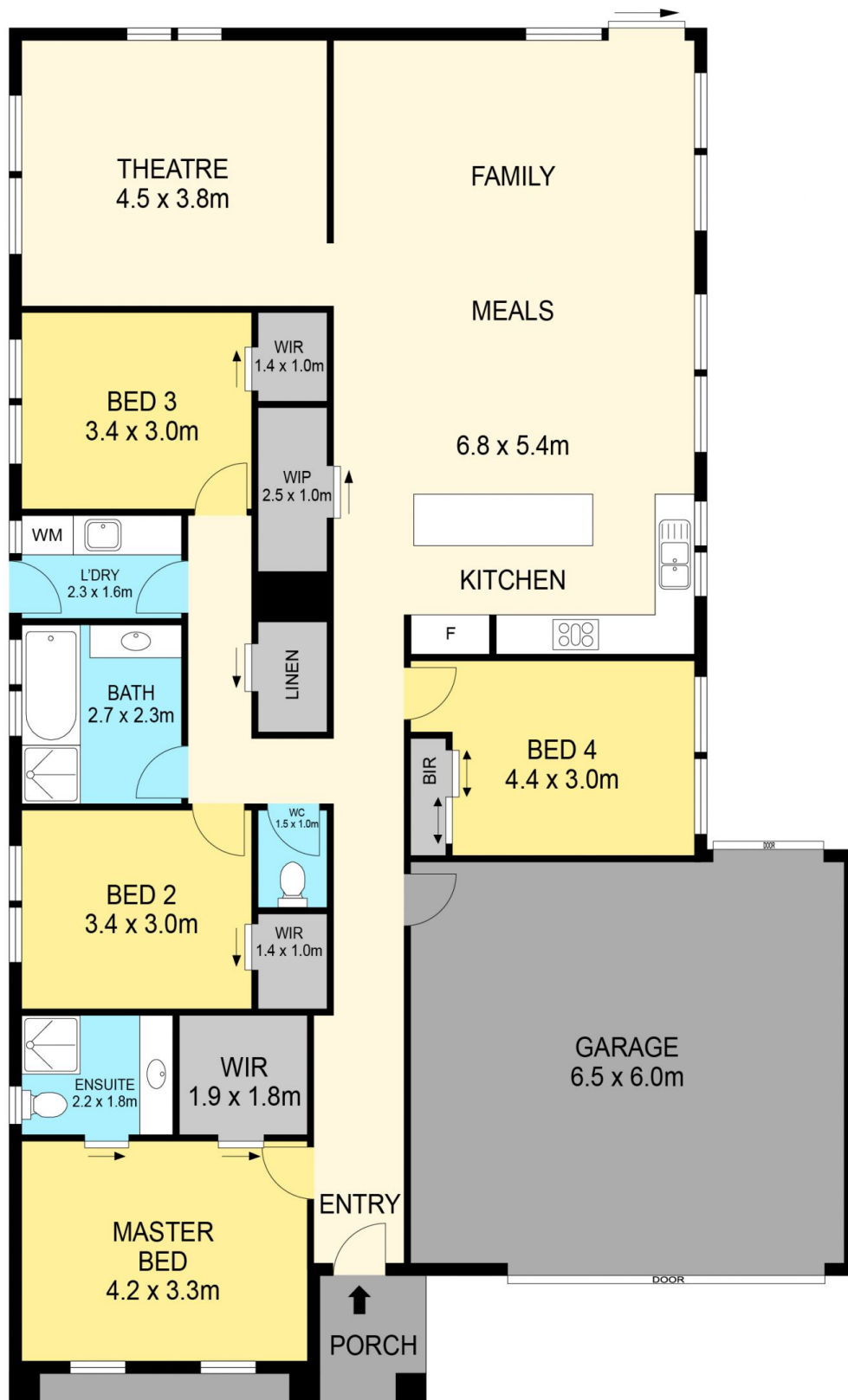
This brand new home is ideally positioned on a big 425 Sqm (approx.) block in the popular "Olivia Estate" which features gorgeous parks and playgrounds within. Located just 25Kms(approx.) from the Melbourne CBD with the Western Freeway and Rockbank train station both only a 4-minute (approx.) drive for an easy commute to the city. Both the future Rockbank and Mount Atkinson (Westfield) town centres will be only a 5-minute (approx.) drive away.

Upon entry to this beautiful large home, you will immediately notice the grand high ceilings, gorgeous floating floors and a wide section of the hallway providing a great space to accommodate shoes and jackets. Moving down the hallway to the hub of the home you will be greeted with a spacious open plan kitchen/meals/living area. In this zone the luxurious well-appointed kitchen is a real feature with a 900mm cooktop/oven, stone benchtops,

Price : \$ 690,000
Land Size : 425 sqm
View : <https://www.doepels.com.au/sale/vic/west/truganina/residential/house/7290846>



Peter Wekerle
03 5331 2000



DISCLAIMER

PLANS SHOWN ARE FOR MARKETING PURPOSES ONLY, ALL DIMENSIONS ARE APPROXIMATE AND NOT TO SCALE. THEY ARE SUBJECT TO ERRORS AND INACCURACIES AND NO LIABILITY WILL BE ACCEPTED. INTERESTED PARTIES SHOULD MAKE THEIR OWN INQUIRIES.

Doepel
Lilley+
Taylor

Printed: 10/10/2023