



**2/25 Paling Street Ballarat North VIC**

2 1 1

Situated in an ultimate high demand locale North of Ballarat's central area, a most suitable location for Western Freeway commuters. Investors and retirees ticks your boxes as close to public transport, Northway, Stockland and Howitt Shopping Centres. An immaculate, low maintenance 2 bedroom unit displaying a comfortable, inviting free flowing floor-plan inside. Relish the opportunity to enjoy easy access to Lake Wendouree, bowling club, childcare, schools, medical centres and the CBD. Call Matt to book an inspection and chat about all this location has to offer!

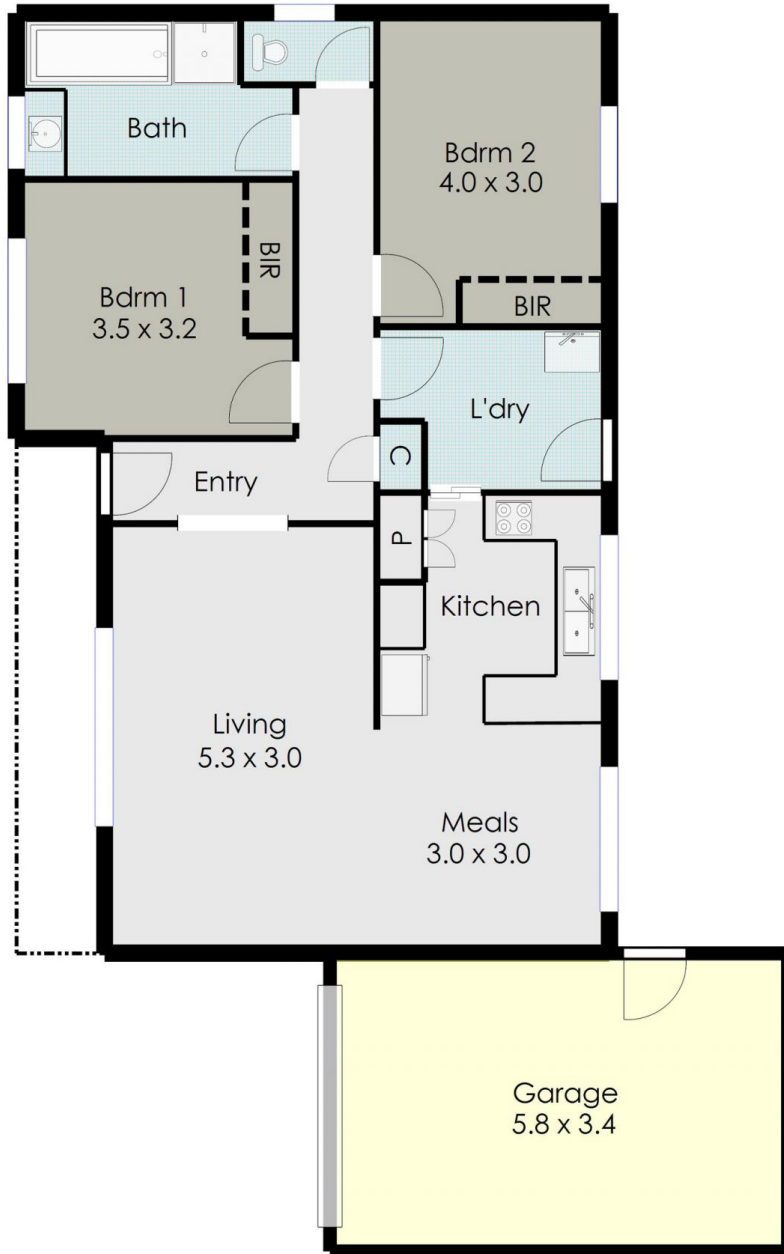
**Price** : \$ 380,000  
**Land Size** : 194 sqm  
**View** : <https://www.doepels.com.au/sale/vic/ballarat-western-district/ballarat-north/residential/unit/7272267>



**Matthew Tunbridge**  
03 5331 2000



**John Morris**  
03 5331 2000



DISCLAIMER:

ALL DIMENSIONS ARE APPROXIMATE & NOT 100% TO SCALE.  
FOR FURTHER INFORMATION, PLEASE CONTACT YOUR AGENT DIRECTLY.

