



15 Sheehan Court Ballarat East VIC

3 2 2

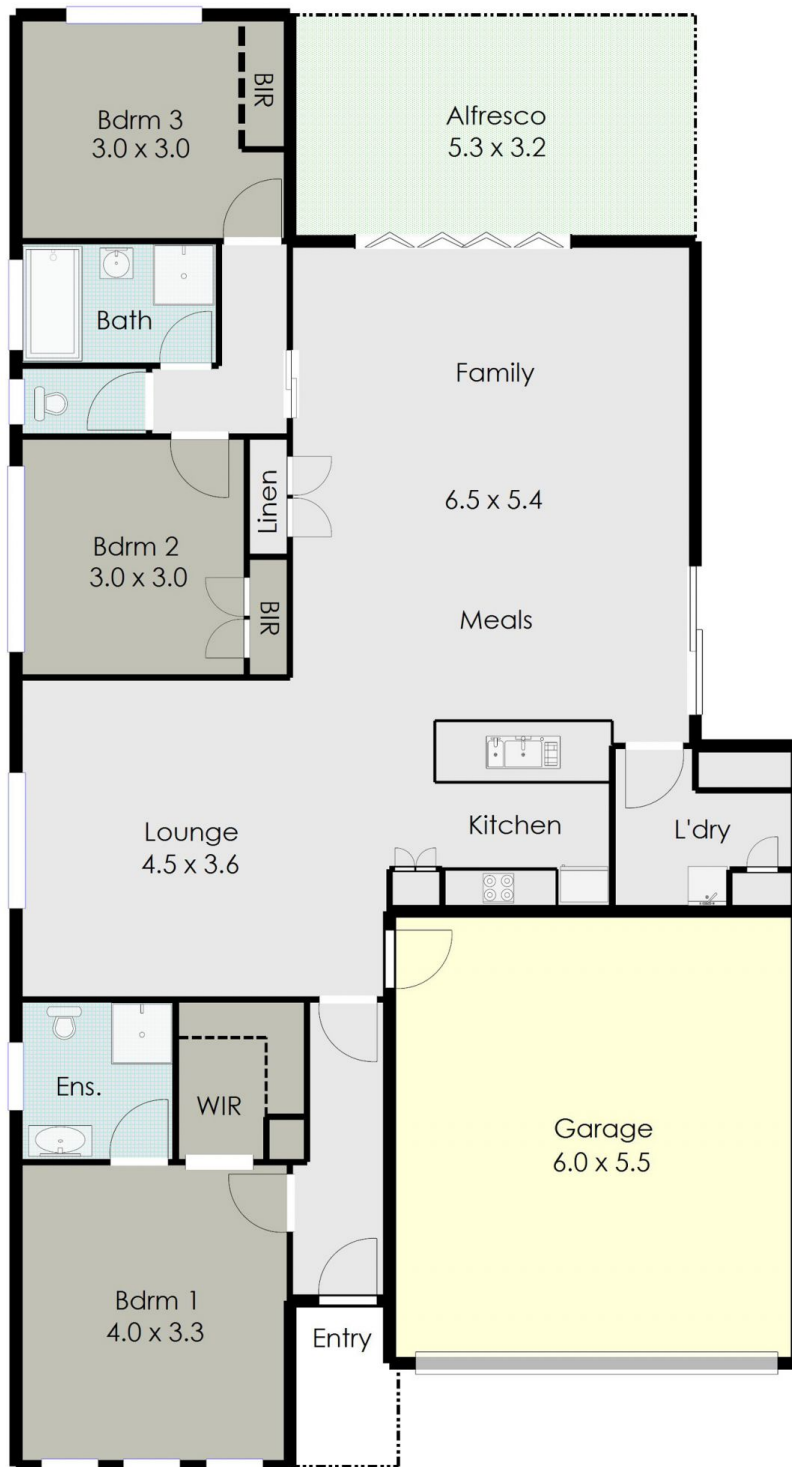
Situated off Kline Street in a quiet well-presented court on a 326sqm (approx.) block is this three bedroom brick veneer home. Featuring three bedrooms, the main with ensuite and walk-in robe, built-in robes to the other two, a second bathroom with separate shower and bath and a separate WC. The main living space of the home contains the kitchen, fitted with stainless steel appliances, a cosy carpeted lounge area and a large open plan meals and living area which continues out through bi-foldable glass doors to the generous undercover deck perfect for entertaining friends and family. The rear yard is fully fenced and has a beautiful outlook of large gums and other native trees from the small reserve behind. Other features include gas central heating, linen closet and a DLUG with auto door and direct access to the house. The home has a lovely spacious usable feel to it and would ideally suit a new family, first home buyer or investor with a rental

Price : \$ 505,000

View : <https://www.doepels.com.au/sale/vic/ballarat-western-district/ballarat-east/residential/house/7212400>



Leigh Hutchinson
03 5331 2000



DISCLAIMER:

ALL DIMENSIONS ARE APPROXIMATE & NOT 100% TO SCALE.
FOR FURTHER INFORMATION, PLEASE CONTACT YOUR AGENT DIRECTLY.

