

1/1358 Gregory Street Lake Wendouree VIC

2 1 2

Inspections by appointment only-no entry without a prior appointment, please call sales agent John Morris on 0418 543637 to register for open house inspections or arrange a time to suit.

An immaculate home on its own title in a prime Lake Wendouree location only minutes to the Lake, Grammar School, station and shops. Comprising 2 spacious bedrooms, walk in robe and semi ensuite to main, built in robes to other, spacious double garage with remote panel lift door and the security of direct house access, and wonderful living areas with a fantastic northerly aspect. The kitchen is centrally located between the living and dining areas and is well appointed with gas appliances, dishwasher, split system heating/cooling, ducted gas heating, quality furnishings and the spacious feel of 8'6" ceilings. Well paved private courtyard featuring easy-care

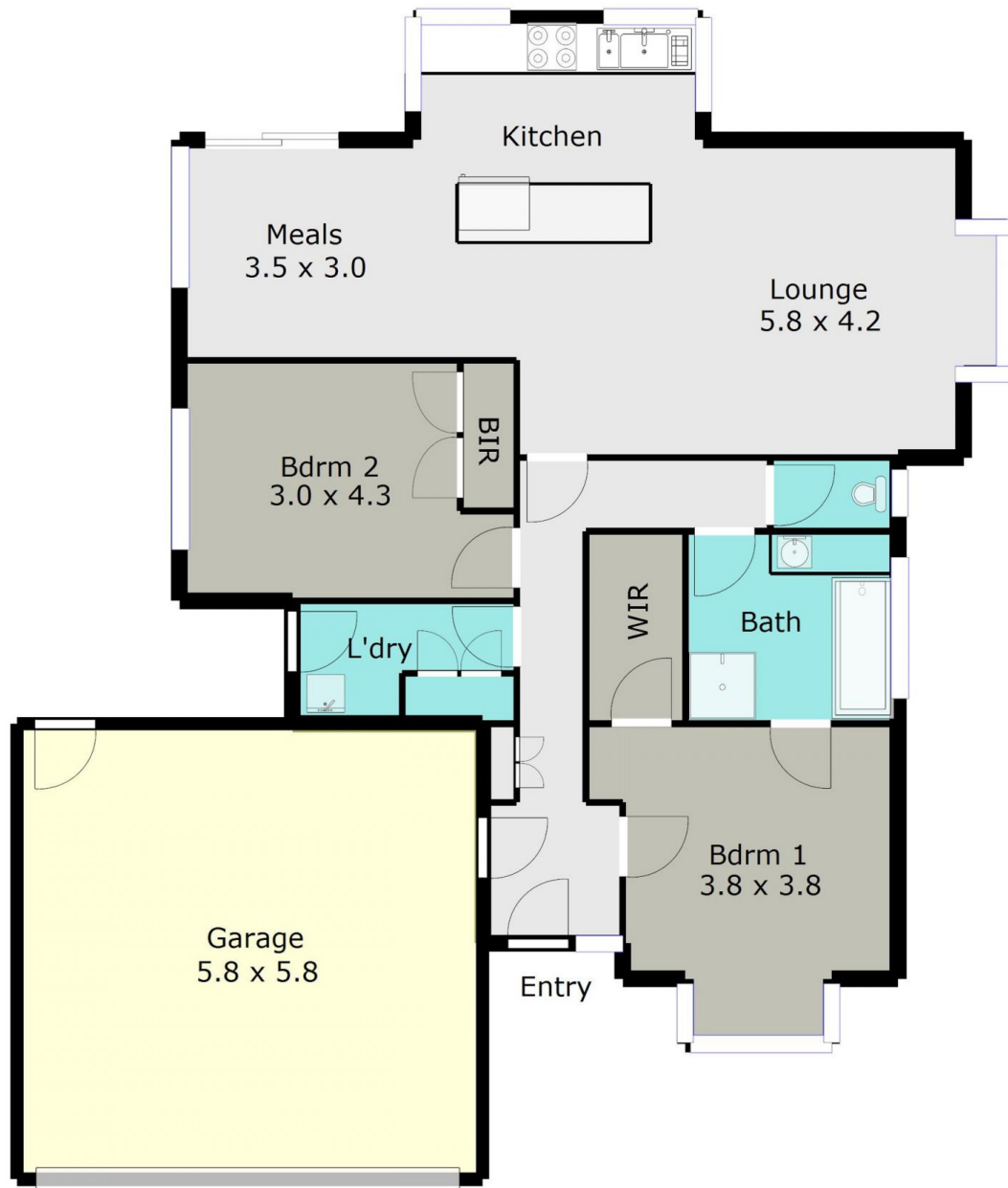
Price : \$ 575,000
Land Size : 360 sqm
View : <https://www.doepels.com.au/sale/vic/ballarat-western-district/lake-wendouree/residential/unit/6626386>



John Morris
03 5331 2000



Leigh Hutchinson
03 5331 2000



DISCLAIMER:

ALL DIMENSIONS ARE APPROXIMATE & NOT 100% TO SCALE.
FOR FURTHER INFORMATION, PLEASE CONTACT YOUR AGENT DIRECTLY.

