



16 Limerick Street Alfredton VIC

4 2 2

Fall in love with the position and amenity! Close proximity to childcare facilities, both public and private schools, sporting and leisure facilities plus shopping precincts. Immaculate new build comprising 4 bedrooms and 3 living zones, beautifully finished and showcases a premier interior design. Filled with natural light the open plan kitchen, meals and family zone seamlessly integrates with the outdoor undercover area, ideal for dining or relaxing whilst appreciating the immaculately landscaped rear yard, approx. block size 512M2. This pristine aesthetic continues throughout with quality finishes; well-appointed kitchen with stone bench tops, island bench, stainless steel appliances and a walk in pantry that still continues to show the flawless decorating style. Master bedroom with ceiling fan, walk in robe and an ensuite to impress, 3 further bedrooms all comfortable in size with built-in-robos and serviced by an equally stylish main bathroom. Double

Price : \$ 595,000
Land Size : 512 sqm
View : <https://www.doepels.com.au/sale/vic/ballarat-western-district/alfredton/residential/house/6188526>

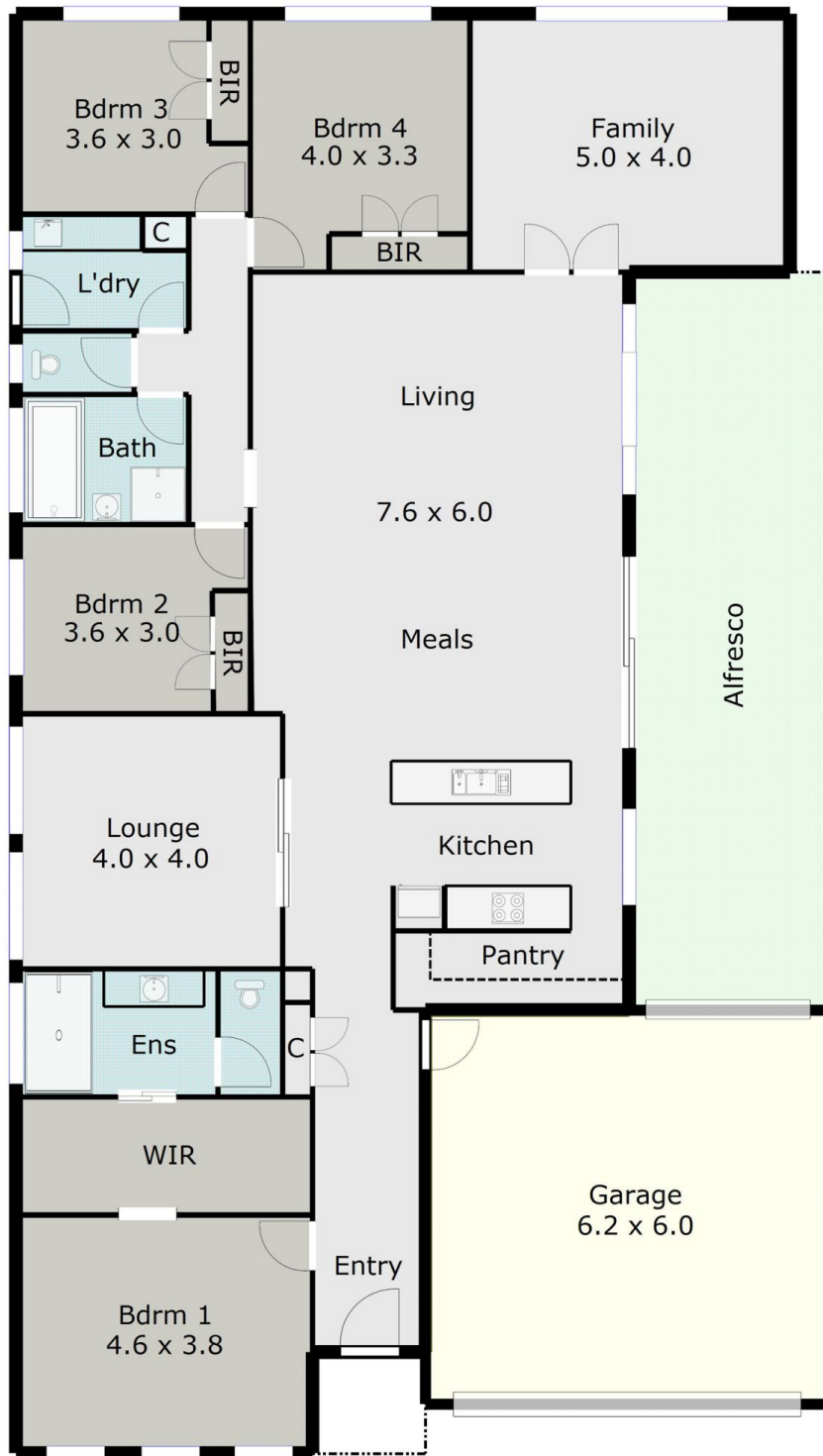


Leigh Hutchinson
03 5331 2000



Robert Cunningham
5337 0040

TOTAL LIVING AREA: APPROX. 22.4 SQ



DISCLAIMER:

ALL DIMENSIONS ARE APPROXIMATE & NOT 100% TO SCALE.
FOR FURTHER INFORMATION, PLEASE CONTACT YOUR AGENT DIRECTLY.

