

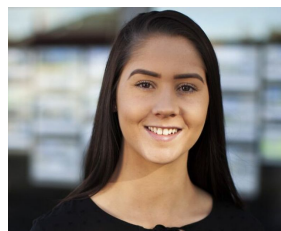


1116 Eyre Street Newington VIC

2 1 1

This beautifully presented house has many features which include polished floorboards and gas central heating throughout, large lounge, formal dining room or study, two spacious bedrooms with freestanding robes, kitchen with gas cooking and a good sized bathroom with shower over bath. Rear access and parking from Duke Street, walking distance to schools, sports fields and Lake Wendouree. All this with a bus stop conveniently at your front door. Inspection is a must. No Internal Smoking. Strictly no pets. 12 Month Lease.

View : <https://www.doepels.com.au/lease/vic/ballarat-western-district/newington/residential/house/6188465>



Eve Peters