



46 Wicklow Drive Invermay Park VIC

4 2 2

Looking for an absolutely immaculate family home or low maintenance executive investment property- investigate no further this one is ideal! Beautifully presented 4 bedroom brick veneer with two living areas and 2 bathrooms on a large allotment in prestigious Invermay Park. A spacious, light filled home with generous open plan living inside and out, undercover entertaining space to enjoy with family and friends, double lock up garage with rear roller door access to back yard. A tightly held and in-demand suburb, close to schools, Midlands Golf Course, shopping centre and with easy access to the Melbourne freeway this home will tick all your boxes. This is the complete package and just minutes to Ballarat's CBD. Surrounded by other quality family homes and with limited opportunities to purchase in this highly regarded area, don't delay your inspection of this

Type : House
Price : \$ 490,000
Land Size : 935 sqm
View : <https://www.doepels.com.au/sale/vic/ballarat-western-district/invermay-park/residential/house/6188217>



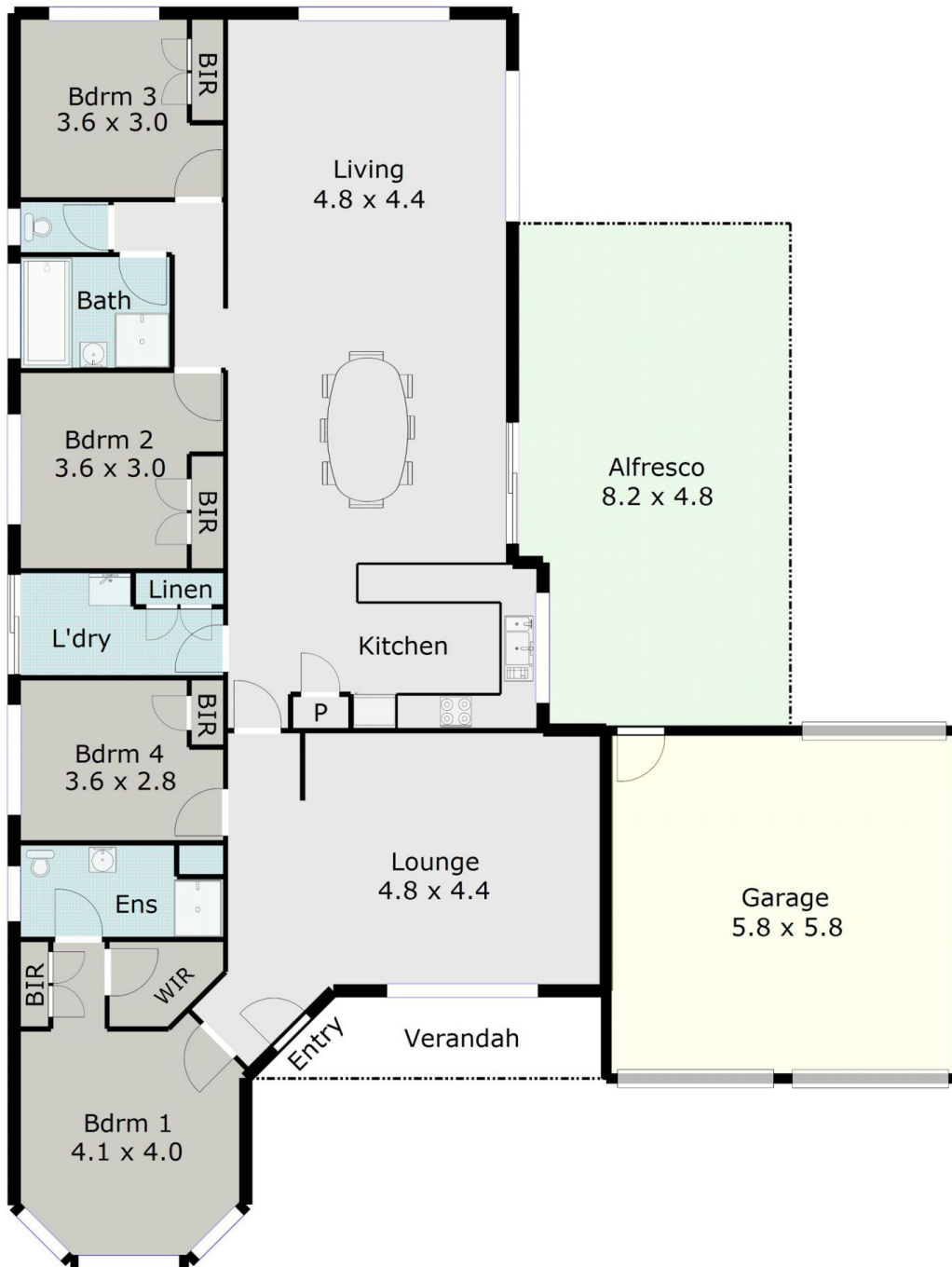
Leigh Hutchinson
03 5331 2000



Robert Cunningham
03 5337 0040

[For full version visit the website](#)

TOTAL LIVING AREA: APPROX. 17.8 SQ



DISCLAIMER:

ALL DIMENSIONS ARE APPROXIMATE & NOT 100% TO SCALE.
FOR FURTHER INFORMATION, PLEASE CONTACT YOUR AGENT DIRECTLY.

