

**213 Otway Street South Ballarat East VIC**

3 1 2

Extremely well presented home, first time on the market in 35 years! Perfectly positioned corner allotment of 683m2 on the Melbourne side of Ballarat, within walking distance to the city centre plus public transport and schools all close by, enjoy the elevated views over Ballarat. Fantastic for first time buyers looking for plenty of space or developers looking to build a unit at the rear (STCA). Featuring three bedrooms, a modern custom built kitchen, fully renovated bathroom, quality floating floor, stained glass feature door plus a freshly painted and separate spacious lounge complete with gas log fire heater. From the feature pergola outside you can sit and look out over the low maintenance backyard garden, simply enjoy those sunny days. Dual off street parking under the carport, with the added safety of lockable gates. This charming property will appear to all ages and awaits your personal inspection.

**Price** : \$ 332,000  
**Land Size** : 683 sqm  
**View** : <https://www.doepels.com.au/sale/vic/ballarat-western-district/ballarat-east/residential/home/6188203>

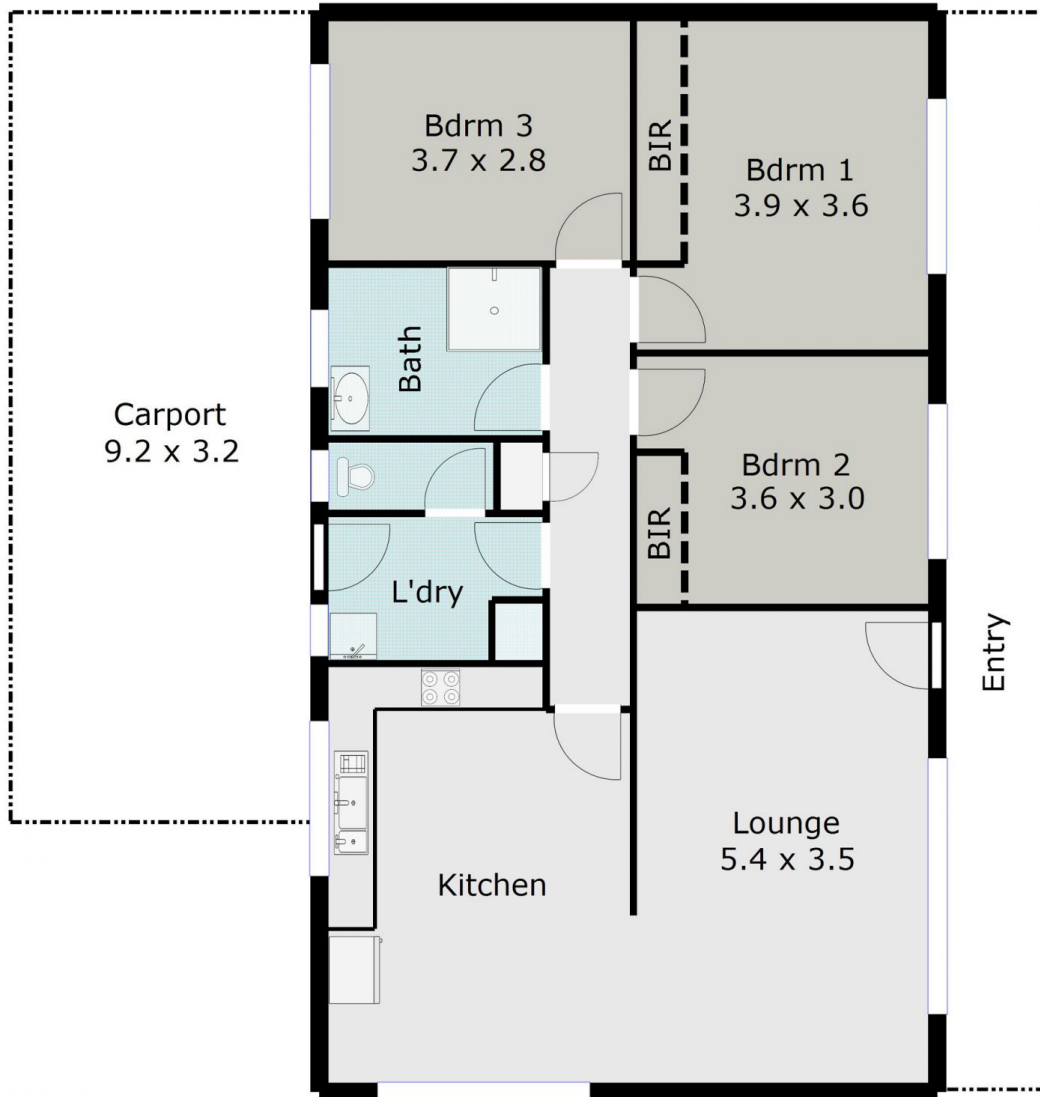


**Robert Cunningham**  
5337 0040



**Tony Lockyer**  
03 5331 2000

TOTAL LIVING AREA: APPROX. 10.3 SQ



DISCLAIMER:

ALL DIMENSIONS ARE APPROXIMATE & NOT 100% TO SCALE.  
FOR FURTHER INFORMATION, PLEASE CONTACT YOUR AGENT DIRECTLY.

