



20 Limerick Street Alfredton VIC

4 2 2

Please contact Leigh Hutchinson or any of our sales consultants to arrange a convenient time to conduct a safe and controlled private inspection.

Positioned in a rapidly expanding location of Alfredton, in one of Ballarat's most sought after, quality estates within close proximity to both public and private schools, sporting and leisure facilities and shopping precincts. Embrace quality living with this superior 4 bedroom open plan home with an elegant, light filled interior. The open plan living zone; kitchen, meals and living unites access to the expansive alfresco/entertaining area which creates a private and tranquil setting for outdoor living. The kitchen showcases stone benchtops, walk in pantry and stainless steel appliances. Master bedroom features a walk in robe and ensuite, the three additional bedrooms boast built in robes. Spacious, comfortable living with an additional

Price : \$ 606,000
Land Size : 576 sqm
View : <https://www.doepels.com.au/sale/vic/ballarat-western-district/alfredton/residential/house/6188176>

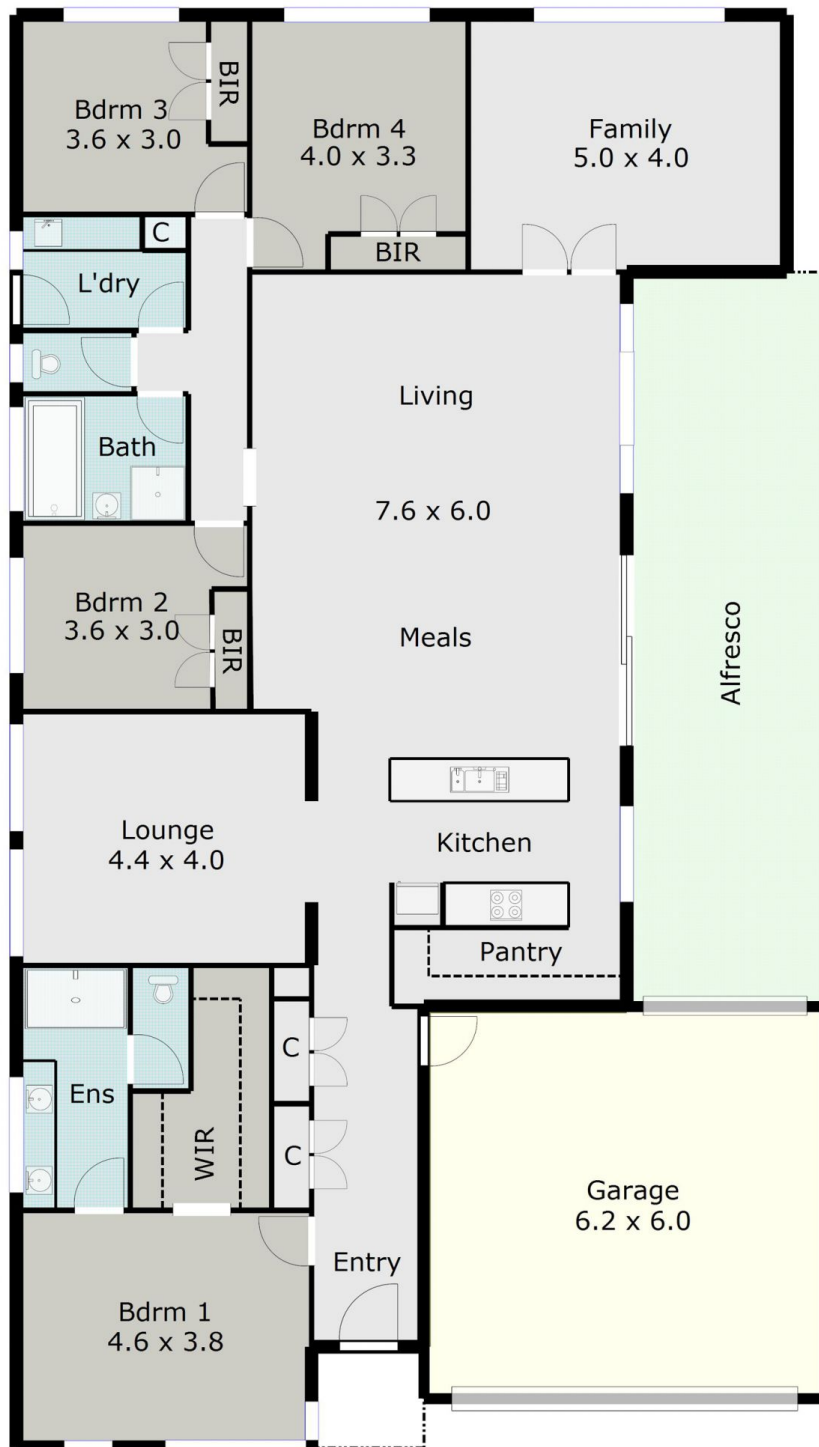


Leigh Hutchinson
03 5331 2000



Robert Cunningham
5337 0040

TOTAL LIVING AREA: APPROX. 22.4 SQ



DISCLAIMER:

ALL DIMENSIONS ARE APPROXIMATE & NOT 100% TO SCALE.
FOR FURTHER INFORMATION, PLEASE CONTACT YOUR AGENT DIRECTLY.

