



43 Golf Course Lane Beaufort VIC

5 2 4

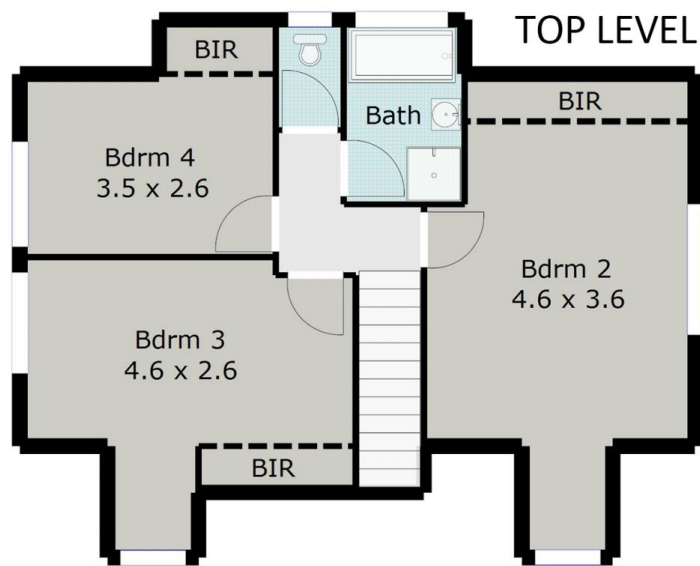
Just what you have been searching for:-close to town (adjacent to golf course), 4 or 5 bedroom layout, superb 8 acre allotment with stunning views, huge shed, and no external painting . . . Ever! A lovely property only 1km to schools, 2km to supermarket yet all the hallmarks of quiet country living. This charming cottage is surprisingly spacious and versatile and offers 2 or 3 living areas with 4 or 5 bedrooms, 2 bathrooms and 3 toilets. A magnificent balcony/verandah overlooks the undulating well fenced acres, golf course and Mt Bolton in the distance. Abundant water supply of app 67,000 litres, 5kw solar, 2 phase power, orchard and fantastic shedding of app 6x18m with 6x6m carport. Make your move now to this fabulous country environment with township benefits.

Price : \$ 447,750
Land Size : 3.3 ha
View : <https://www.doepels.com.au/sale/vic/ballarat-western-district/beaufort/residential/house/6188144>

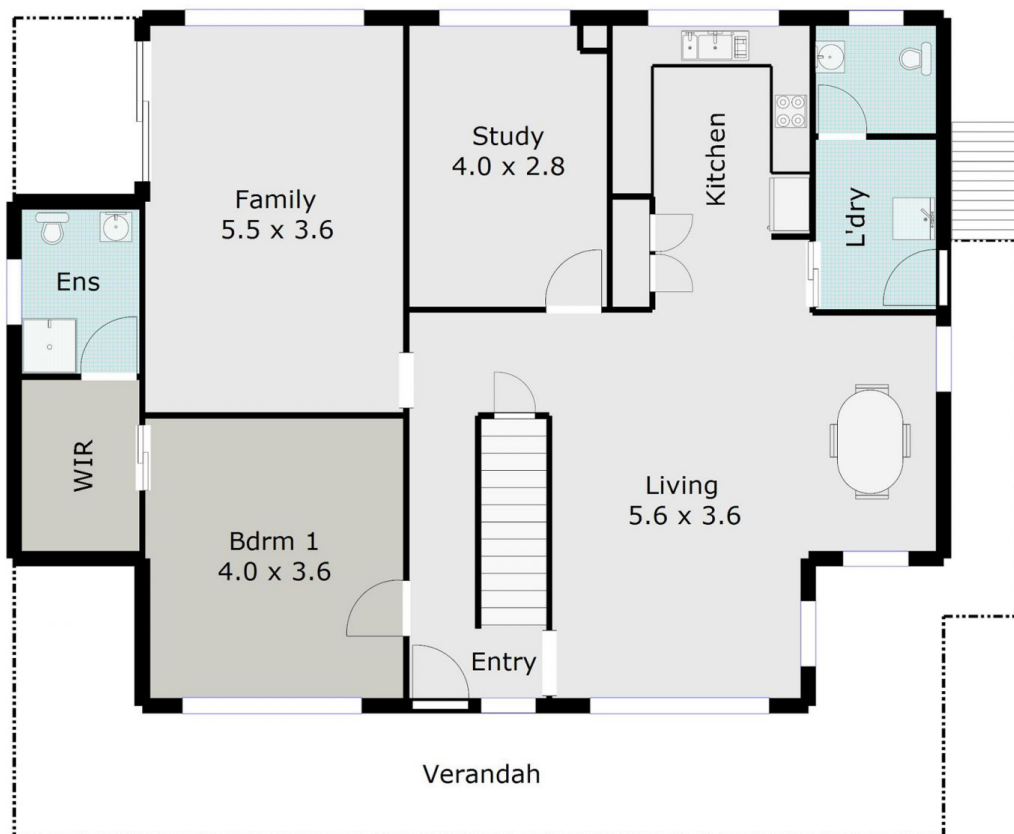


John Morris
03 5331 2000

TOTAL LIVING AREA: APPROX. 18.8 SQ



GROUND FLOOR



DISCLAIMER:

ALL DIMENSIONS ARE APPROXIMATE & NOT 100% TO SCALE.
FOR FURTHER INFORMATION, PLEASE CONTACT YOUR AGENT DIRECTLY.

