



240 Elsworth Street Mount Pleasant VIC

4 2 2

This is the ideal location for an investment property with easy access to the University, Mount Helen amenities and Ballarat CBD. Comprising four bedrooms with built in robes, main with En suite and walk in robe, open plan living, double garage and enclosed rear yard, all situated on 336m². The many features include spacious kitchen/meals, stainless steel appliances including dishwasher, large lounge, north facing rear yard access plus gas central heating throughout. Remote control double lock up garage and direct house access plus off street parking, low maintenance landscaped yards. Leased until November 2019 at \$360pwk, this property is offering all that is required for low maintenance, secure investment option with very good tenants.

Price : \$ 355,000
Land Size : 336 sqm
View : <https://www.doepels.com.au/sale/vic/ballarat-western-district/mount-pleasant/residential/house/6188123>

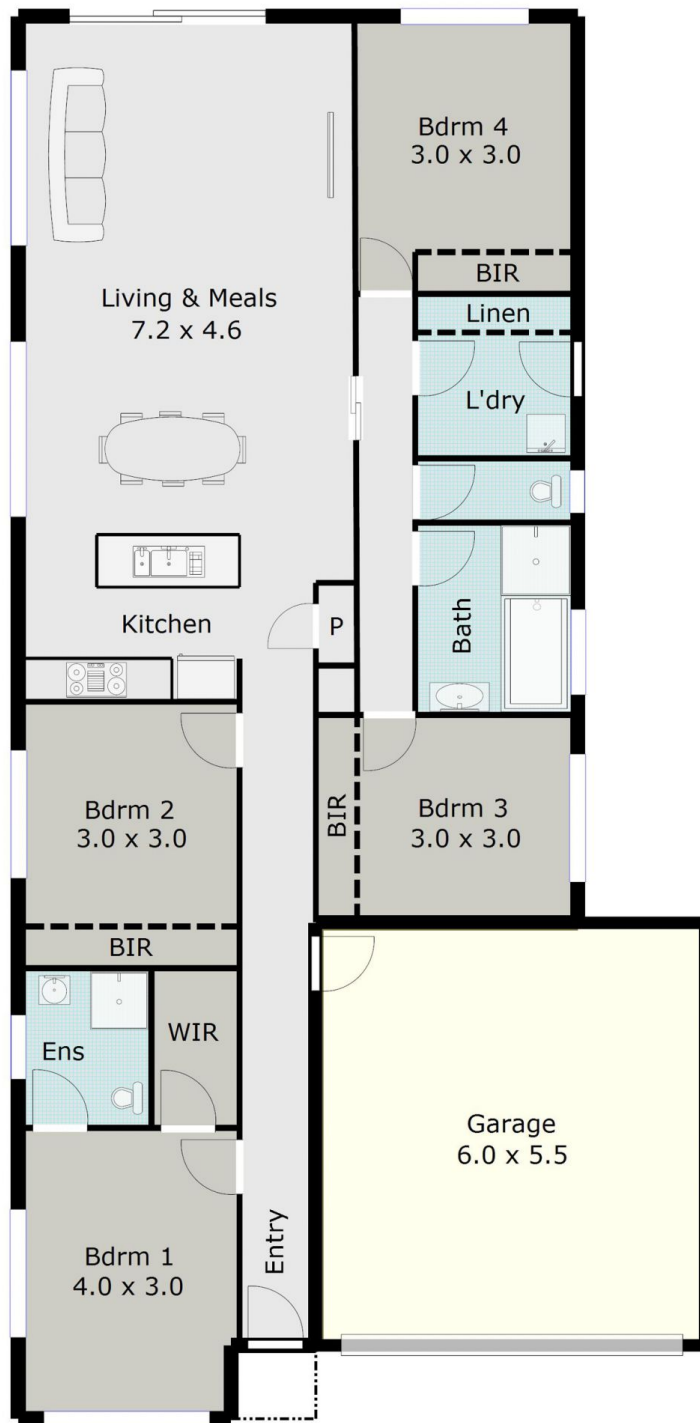


Leigh Hutchinson
03 5331 2000



Tony Lockyer
03 5331 2000

TOTAL LIVING AREA: APPROX. 15.0 SQ



DISCLAIMER:

ALL DIMENSIONS ARE APPROXIMATE & NOT 100% TO SCALE.
FOR FURTHER INFORMATION, PLEASE CONTACT YOUR AGENT DIRECTLY.

