



6 Flewin Avenue Miners Rest VIC

4 2 4

You will benefit all year round with this impressive 4 bedroom family home with double garage and a purpose built adjoining 9m workshop / garage with high entry to locate your caravan, boat etc. This executive home has separate lounge to the open plan design with high ceilings and quality furnishings throughout. This Impressive home provides storage space in all rooms including double robes space in main bedroom. The centre piece kitchen with stone bench top, separate Butler's pantry and an expanse of double glazed German made pvc windows throughout the home is perfect for keeping an eye on the kids. Step out onto an adjacent outdoor entertaining with ceiling lights and fan and yard space. Brivis evaporative air con + 30kw 5 star zoned central heating, heated floors in en suite and bathroom are just some of the many hidden features. Have your own private inspection to see all of the extras included in this impressive energy efficient home has to offer

Price : \$ 470,000

View : <https://www.doepels.com.au/sale/vic/ballarat-western-district/miners-rest/residential/house/6188112>

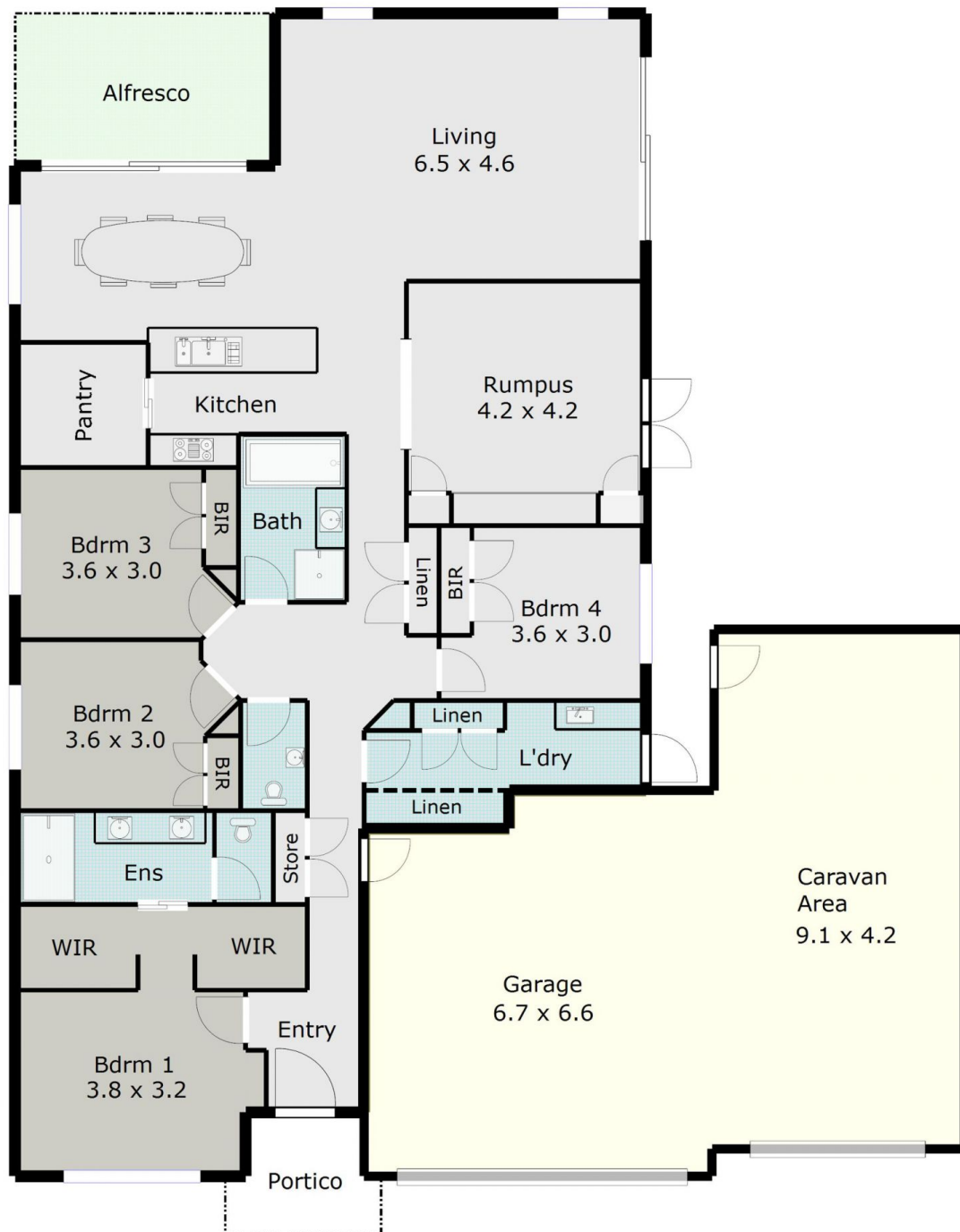


Robert Cunningham
5337 0040



Tony Lockyer
03 5331 2000

TOTAL LIVING AREA: APPROX. 21.4 SQ



DISCLAIMER:

ALL DIMENSIONS ARE APPROXIMATE & NOT 100% TO SCALE.
FOR FURTHER INFORMATION, PLEASE CONTACT YOUR AGENT DIRECTLY.

