



## 222 Elsworth Street Mount Pleasant VIC

4 2 2

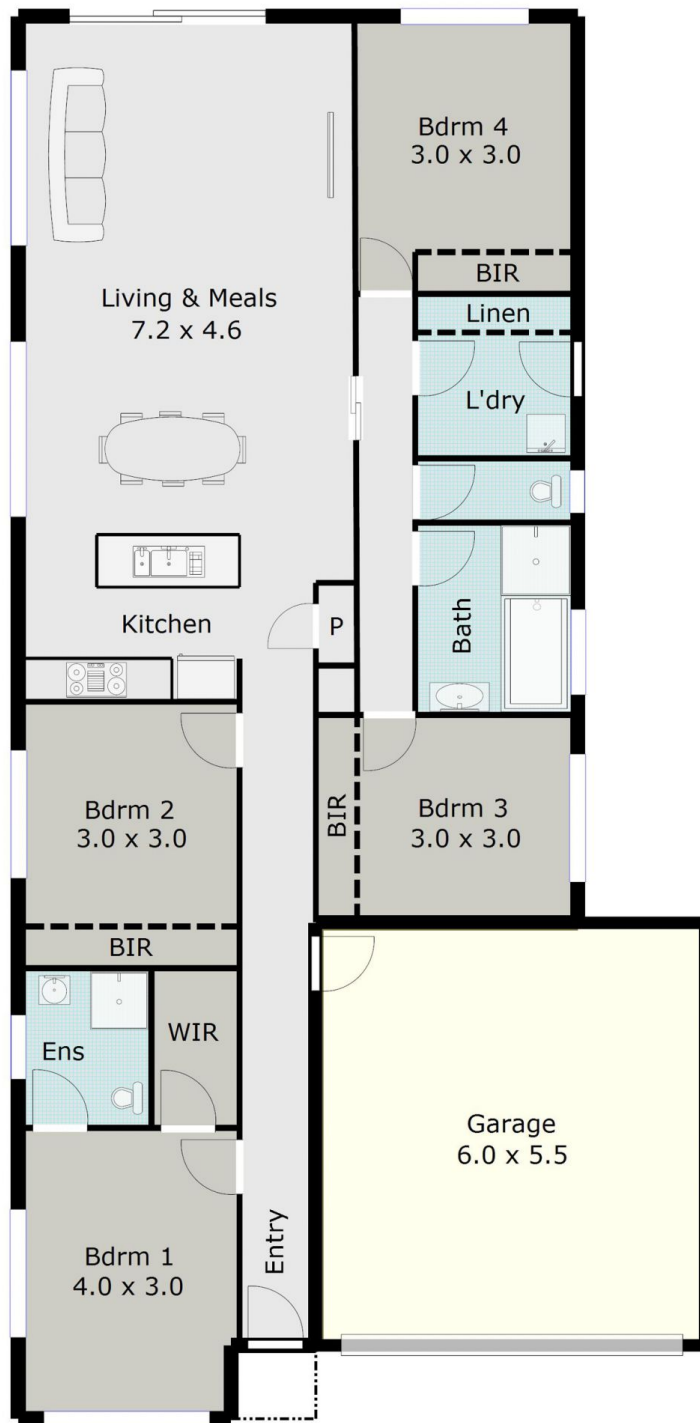
Located in popular Mount Pleasant with easy access to the Ballarat CBD and Fed Uni this four Bedroom home features quality fixtures and fittings throughout, master bedroom with walk in robe and ensuite, remaining three bedrooms with built in robes, spacious open plan kitchen and living area, central heating and evaporative cooling throughout and main bathroom with separate shower and bath. Externally there is a double lock up garage with direct access, a fully enclosed private rear yard and low maintenance gardens. Animals Considered. No internal smoking. 12 Month Lease. INSPECTION BY APPOINTMENT VIA AGENT. SHOULD YOU NOT REGISTER THE INSPECTION MAY NOT PROCEED.

**View :** <https://www.doepels.com.au/lease/vic/ballarat-western-district/mount-pleasant/residential/house/6188103>



**Shane Kozaris**  
03 5337 0066

TOTAL LIVING AREA: APPROX. 15.0 SQ



DISCLAIMER:

ALL DIMENSIONS ARE APPROXIMATE & NOT 100% TO SCALE.  
FOR FURTHER INFORMATION, PLEASE CONTACT YOUR AGENT DIRECTLY.

