



#### 4a Inkerman Street Newington VIC

3 1 1

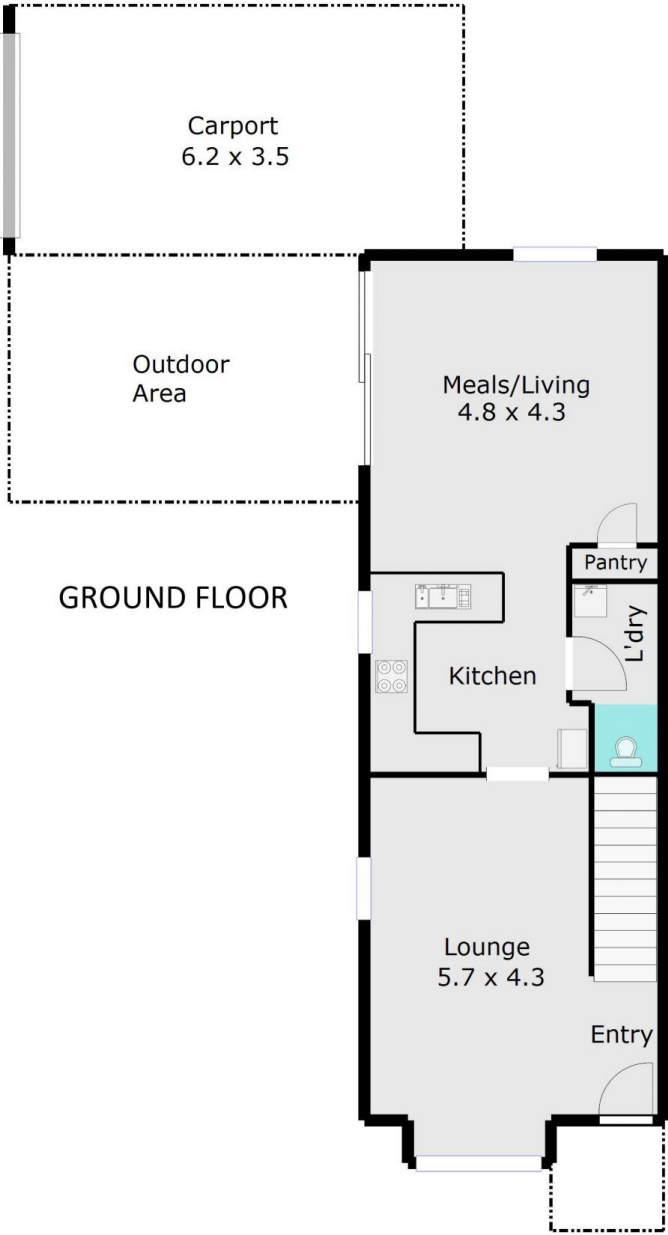
Located in ever popular Newington within easy walking distance to public transport, CBD, schools and Victoria Park the home boasts three spacious bedrooms featuring built in robes, separate lounge, a generous sized open plan kitchen & meals area with quality appliances including gas cooktop, electric oven and dishwasher, family bathroom with separate shower and bath, upstairs and down stairs toilets and completing the package is central heating throughout and evaporative cooling to the first floor. Outside features include a single carport with remote operated door, fully fenced private rear yard with paved undercover entertainment area, garden shed and low maintenance gardens. Animals considered. No internal smoking. 12 Month Lease. INSPECTION BY APPOINTMENT ONLY. SHOULD YOU NOT REGISTER THE INSPECTION MAY NOT PROCEED.

**View :** <https://www.doepels.com.au/lease/vic/ballarat-western-district/newington/residential/townhouse/6188098>



**Shane Kozaris**  
**03 5337 0066**

Total Living Area: 12.3sq



TOP LEVEL

