

**2369 Old Melbourne And Lesters Road Bungaree VIC**

4 1 4

If you are looking for a change in lifestyle, off the farm or getting out of the hustle and bustle of City life, this extremely well presented 20 acre farm-let situated only 15 minutes from Ballarat and an hour from Melbourne provides you a great opportunity to enter this tightly held area. Well positioned on the edge of Bungaree, this extremely well cared for property with ample water supply with tanks, two dams, bore and creek. Two large sheds for machinery and storage, wallnuts & chestnuts tree plantation, on a picturesque and undulating 20 acres is only part of the attraction. The four bedroom recently renovated home with new kitchen, double oven, granite benchtops taking in the morning sun and views of the established gardens. There are new furnishings throughout making this an extremely comfortable and desirable family home. You will go nuts about this.

**Land Size** : 20 Acres

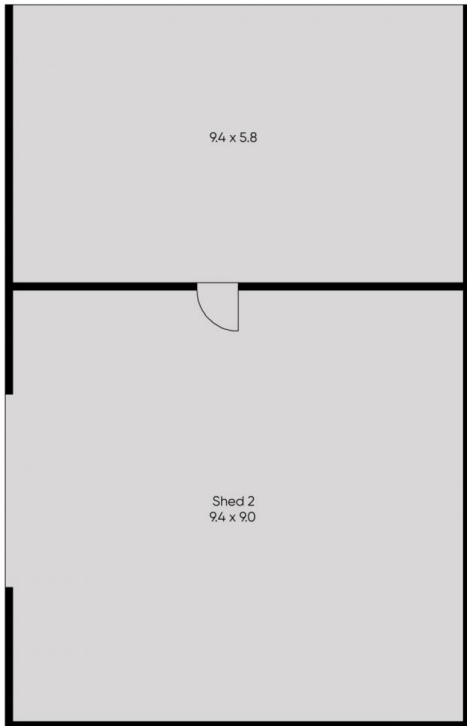
**View** : <https://www.doepels.com.au/sale/vic/ballarat-western-district/bungaree/residential/acrea-gesemirural/6188064>



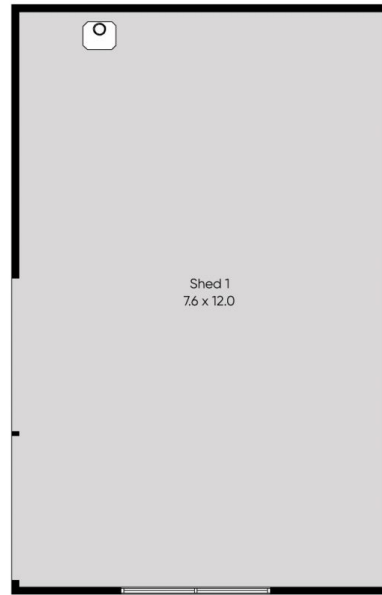
**Robert Cunningham**  
5337 0040



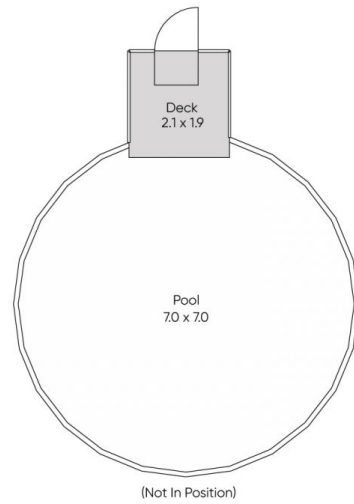
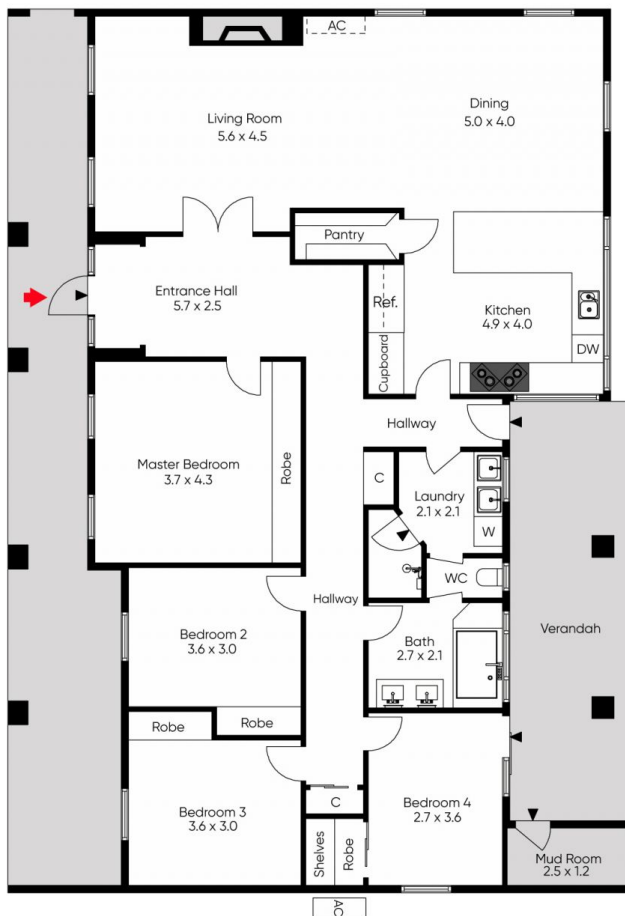
**Leigh Hutchinson**  
03 5331 2000



(Not In Position)



(Not In Position)



(Not In Position)

Produced by **DIAKRIT**

The floor plan is not to scale; measurements are indicative and in metres. Exterior elements are not in position. Plans should not be relied on. Interested parties should make and rely on their own enquiries.



Produced by **DIAKRIT**

The floor plan is not to scale; measurements are indicative and in metres. All features included in this 3D plan are for inspiration purposes only.

This is not an exact replica of the property or the position of exterior elements. Plans should not be relied on. Interested parties should make and rely on their own enquiries.