



### 467 Wiltshire Lane Delacombe VIC

3  1  4 

Only minutes to the new Delacombe Town Centre this unique property may be best suited to a couple or small family who enjoy top quality, convenient, low-maintenance living both inside and out, and have a need for great storage for vehicles, caravan, hobbies etc. Personal inspection is the only way to truly appreciate the calibre of this property, and the extent of its opulent inclusions. Fitted out with the satin series C-Bus category 5 electronics with PC, phone and infrared interface, 7.1 surround sound, CCTV security and many other special features, the home boasts large proportions throughout all rooms including massive main bedroom, walk-in robe and 2-way bathroom with remedial spa, large stepless shower, double vanity etc. Polished Italian porcelain tiles throughout, inlaid granite feature in the entry, ducted heating, gas log fire, an all weather outdoor granite kitchen to impress, oversize double garage under roof plus 15mx7.5m workshop/shed

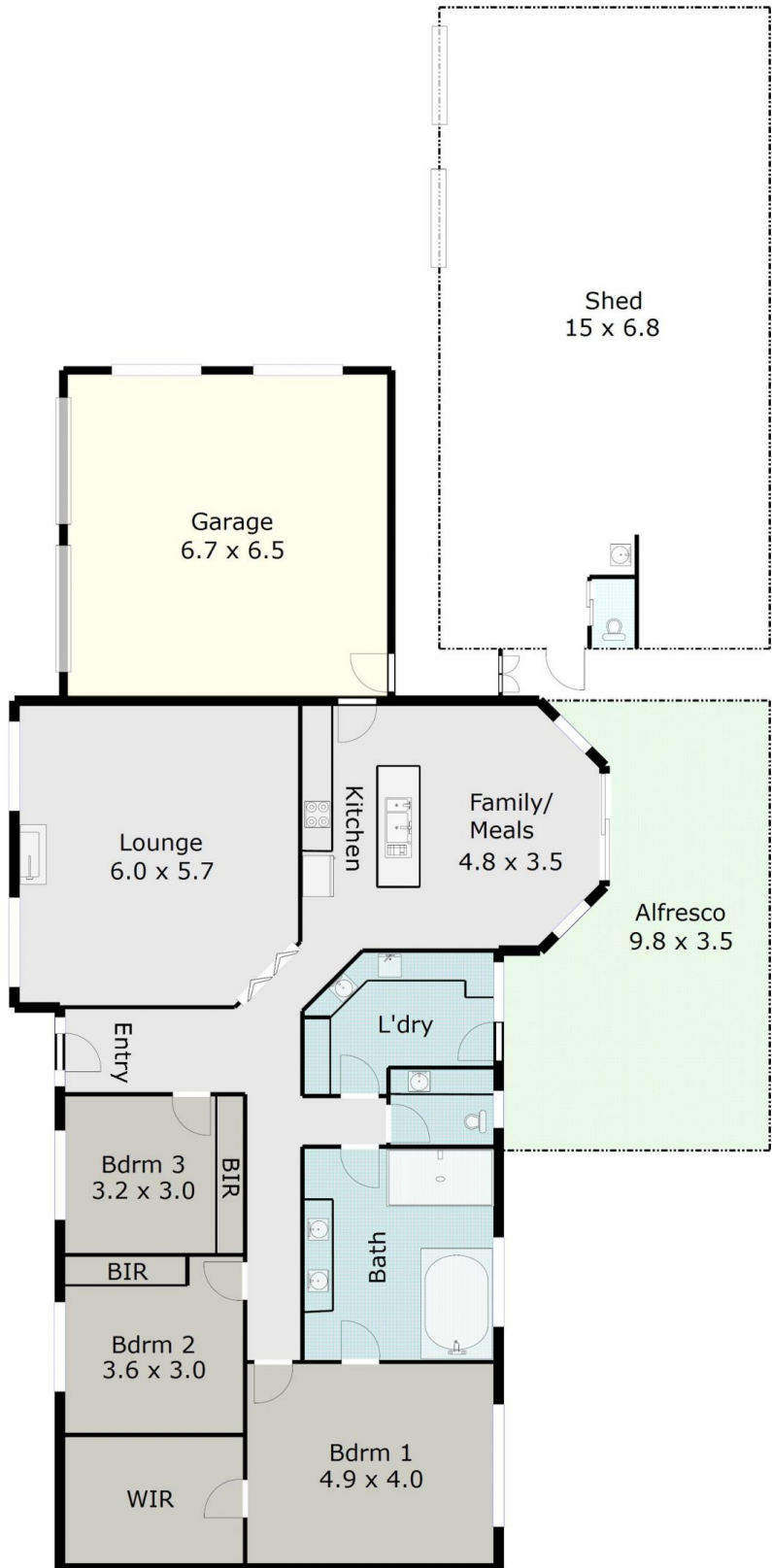
**Price** : \$ 485,000  
**Land Size** : 755 sqm  
**View** : <https://www.doepels.com.au/sale/vic/ballarat-western-district/delacombe/residential/house/6188047>



**John Morris**  
03 5331 2000



**Tony Lockyer**  
03 5331 2000



DISCLAIMER:

ALL DIMENSIONS ARE APPROXIMATE & NOT 100% TO SCALE.  
 FOR FURTHER INFORMATION, PLEASE CONTACT YOUR AGENT DIRECTLY.

