




510 Ti Tree Road Warrenheip VIC

4  2  3 

Highly sought after location in Warrenheip (on the Melbourne side of Ballarat). Set in lovely Ti Tree Road, this 4 bedroom family home offers a glorious outlook over landscaped gardens. A property of this quality, scale and location rarely comes to market and must be inspected to appreciate. Featuring an inviting outdoor space flanking the residence, plus a fantastic man cave. Inside you will find a free-flowing open plan layout with multiple living zones catering to the needs of all family members plus a study. There are 4 large bedrooms including the huge master with double ensuite and large walk in robe, cosy formal lounge and expansive family area. Kitchen with stone waterfall benches, large walk in pantry, stainless steel appliances and pendant lighting. Loaded with valuable extras including double glazed windows, ceiling fans, bore water (clean for drinking), 44000 litre water tank, 3 bay 3 metre high shed, large laundry with ample

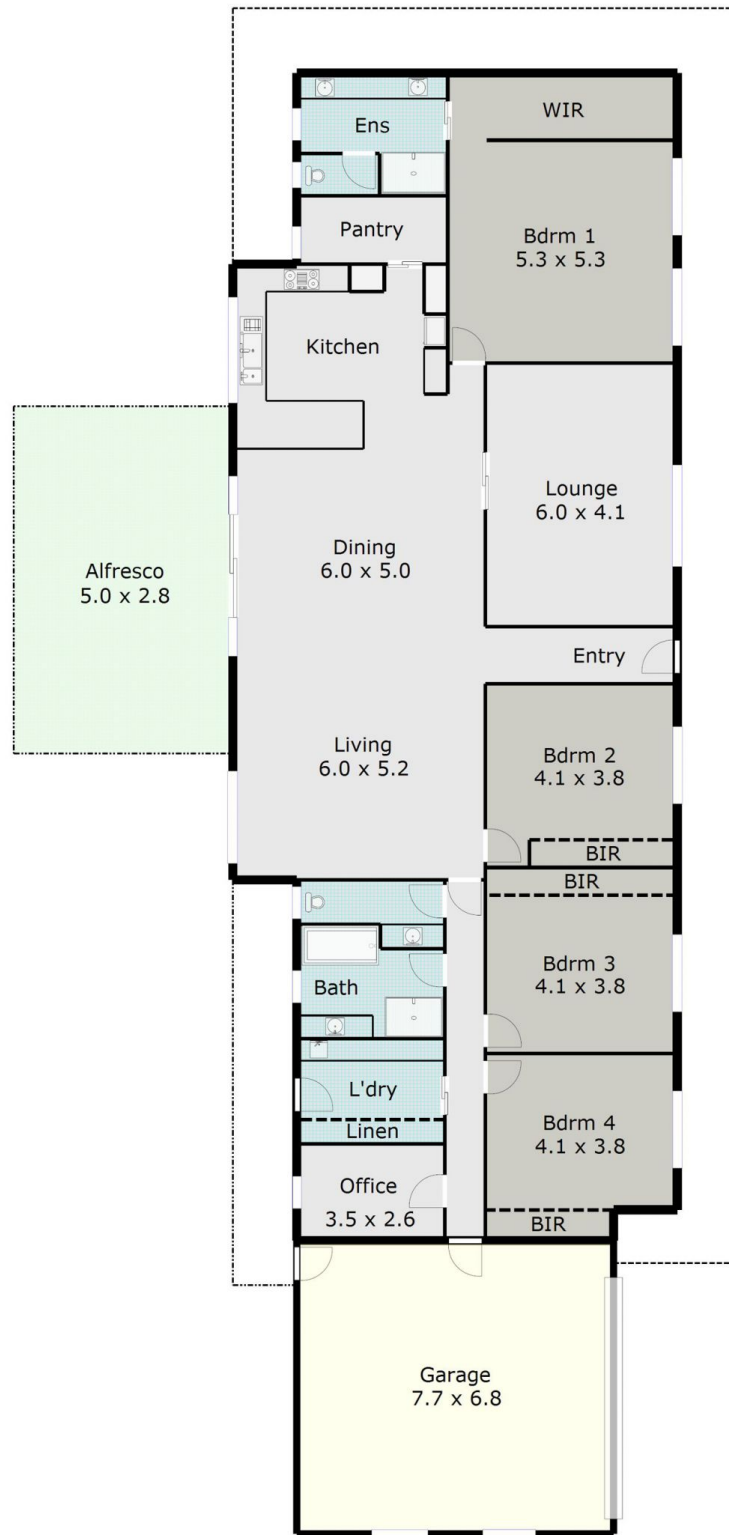
Land Size : 3570 sqm

View : <https://www.doepels.com.au/sale/vic/ballarat-western-district/warrenheip/residential/house/6187987>



Leigh Hutchinson
03 5331 2000

TOTAL LIVING AREA: APPROX. 29.8 SQ



DISCLAIMER:

ALL DIMENSIONS ARE APPROXIMATE & NOT 100% TO SCALE.
FOR FURTHER INFORMATION, PLEASE CONTACT YOUR AGENT DIRECTLY.

