



### 13a Vowles Street Skipton VIC

3 1 2

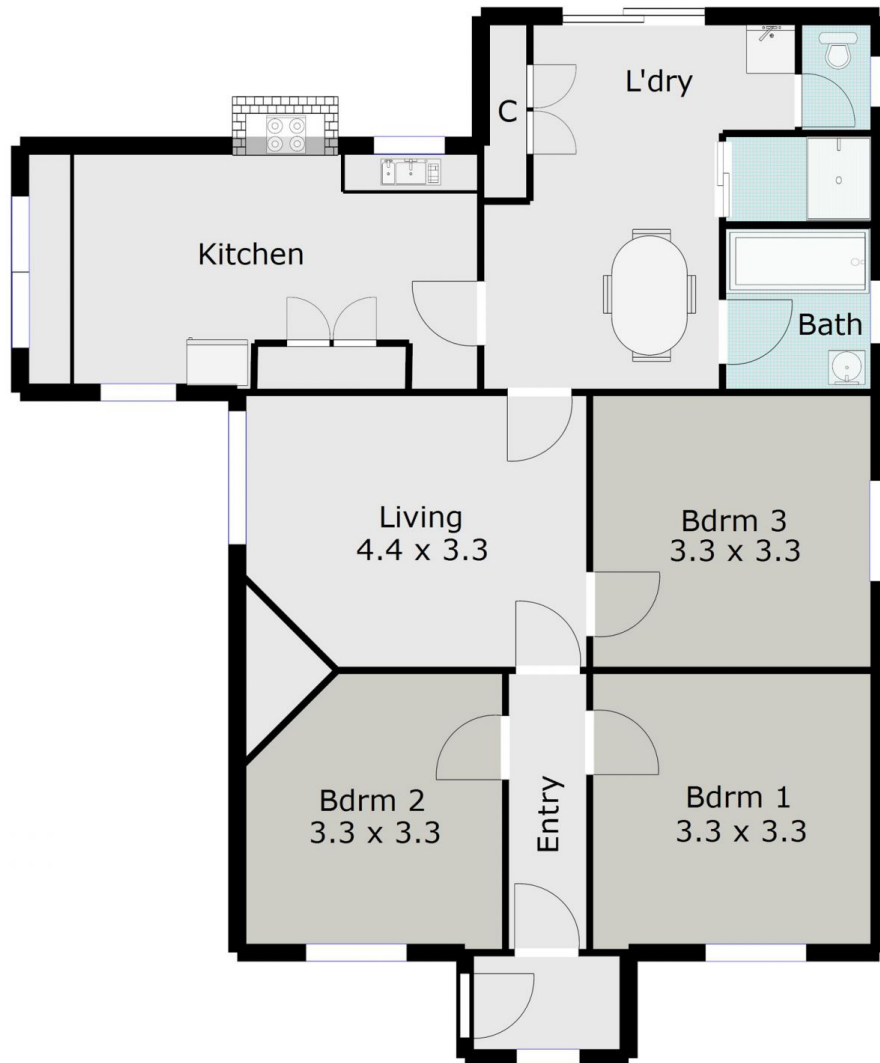
Right at the end of the Ballarat-Skipton Rail Trail this charming ex-railway cottage offers an opportunity for permanent living or perhaps overnight accommodation for trail users. Well located in town opposite the football oval, and with easy access to all facilities, this 3 bed roomed cottage has well proportioned living space, gas heating, electric cooking and hot water. Internal toilet, shower room and bathroom, along with sundry shedding and a lovely rural outlook. Bargain priced living in a beautiful country town with excellent facilities including pre-school, primary school, secondary school transport to Beaufort and Ballarat, medical and aged hostel, golf, bowls, swimming pool etc. Only 30km to Beaufort, 50km to Ballarat and approx 100 to Geelong. Inspect soon.

**View :** <https://www.doepels.com.au/sale/vic/ballarat-western-district/skipton/residential/house/6187982>



**John Morris**  
**03 5331 2000**

TOTAL LIVING AREA: APPROX. 10.4 SQ



DISCLAIMER:

ALL DIMENSIONS ARE APPROXIMATE & NOT 100% TO SCALE.  
FOR FURTHER INFORMATION, PLEASE CONTACT YOUR AGENT DIRECTLY.

