



13/216 Forest Street Wendouree VIC

2 1 1

You will feel safe and secure living at Darriwell Park, a group of townhouses perfectly positioned opposite Ballarat Grammar and within walking distance to Lake Wendouree and Howitt Street shopping. This is a very neat and tidy complex, ideal if you are ready for retirement. With this two bedroom townhouse features, formal entry, separate lounge with gas heating, split system, kitchen meals and upgraded bathroom with walk-in shower and vanity. Small rear yard, carport and lock up shed. Throw the keys away; you will be able to walk to everything.

View : <https://www.doepels.com.au/sale/vic/ballarat-western-district/wendouree/residential/townhouse/6187964>

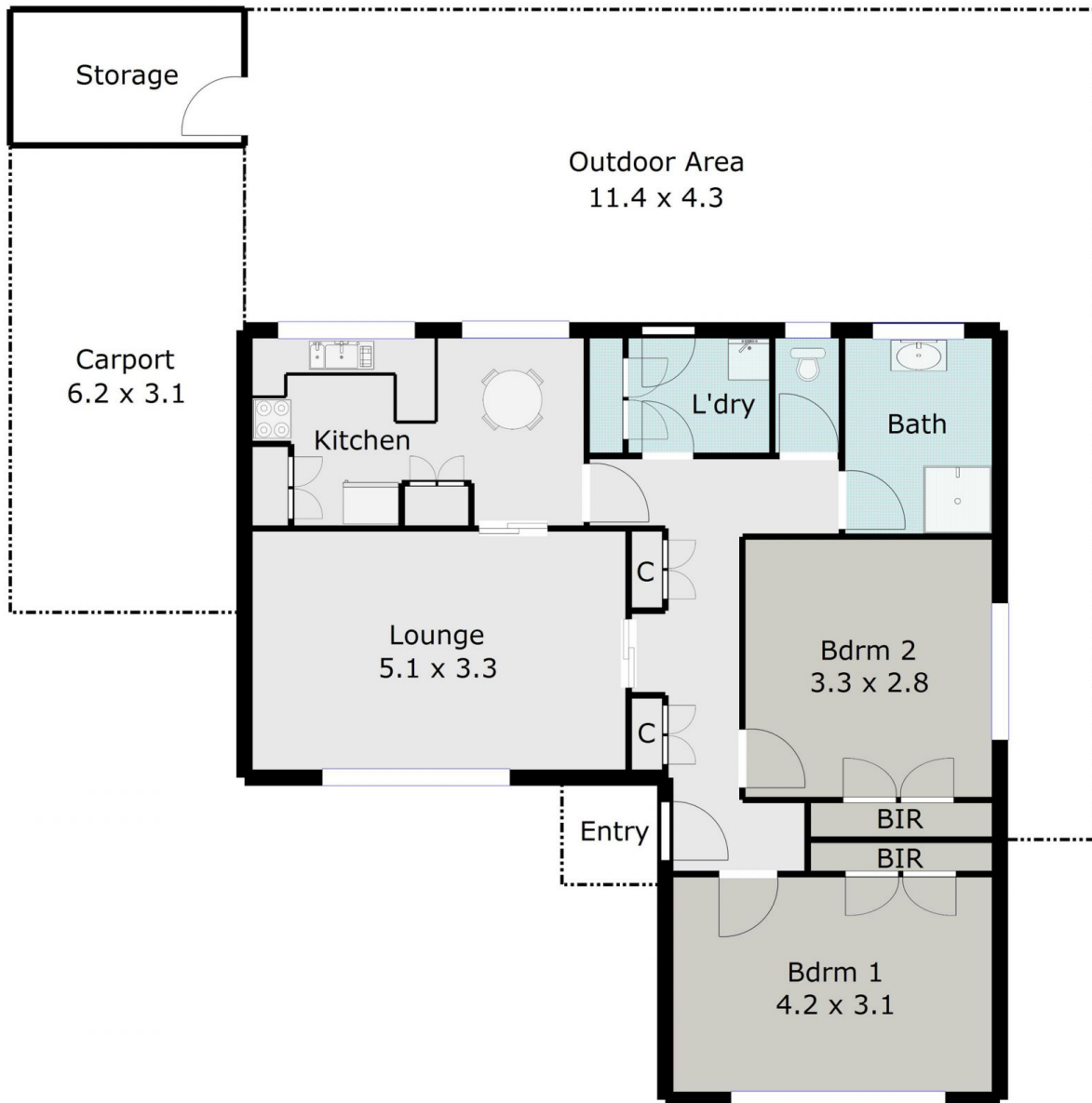


Robert Cunningham
5337 0040



Tony Lockyer
03 5331 2000

TOTAL LIVING AREA: APPROX. 8.8 SQ



DISCLAIMER:

ALL DIMENSIONS ARE APPROXIMATE & NOT 100% TO SCALE.
FOR FURTHER INFORMATION, PLEASE CONTACT YOUR AGENT DIRECTLY.

