



222 Elsworth Street Mount Pleasant VIC

4 2 2

Modern brick veneer, ideally suited to an investor looking for an immediate return on investment but also those wishing to secure a well-built home by renowned builder BCM with an energy rating of 6 stars for the future.

Pleasant Views Estate is central to Ballarat CBD, easy access to University of Ballarat and with public transport going right past the front door makes this location even more desirable and convenient. Comprising four spacious bedrooms, all with BIRs plus ensuite and WIR to the master. Kitchen is modern and complete with SS appliances, spacious and light filled open plan living/dining area, gas central heating, central cooling and gas hot water.

Outside you will find a low maintenance garden and double lock up garage with remote and internal access. Currently let at \$350 pwk until June 2019. Don't delay your inspection!

View : <https://www.doepels.com.au/sale/vic/ballarat-western-district/mount-pleasant/residential/house/6187939>

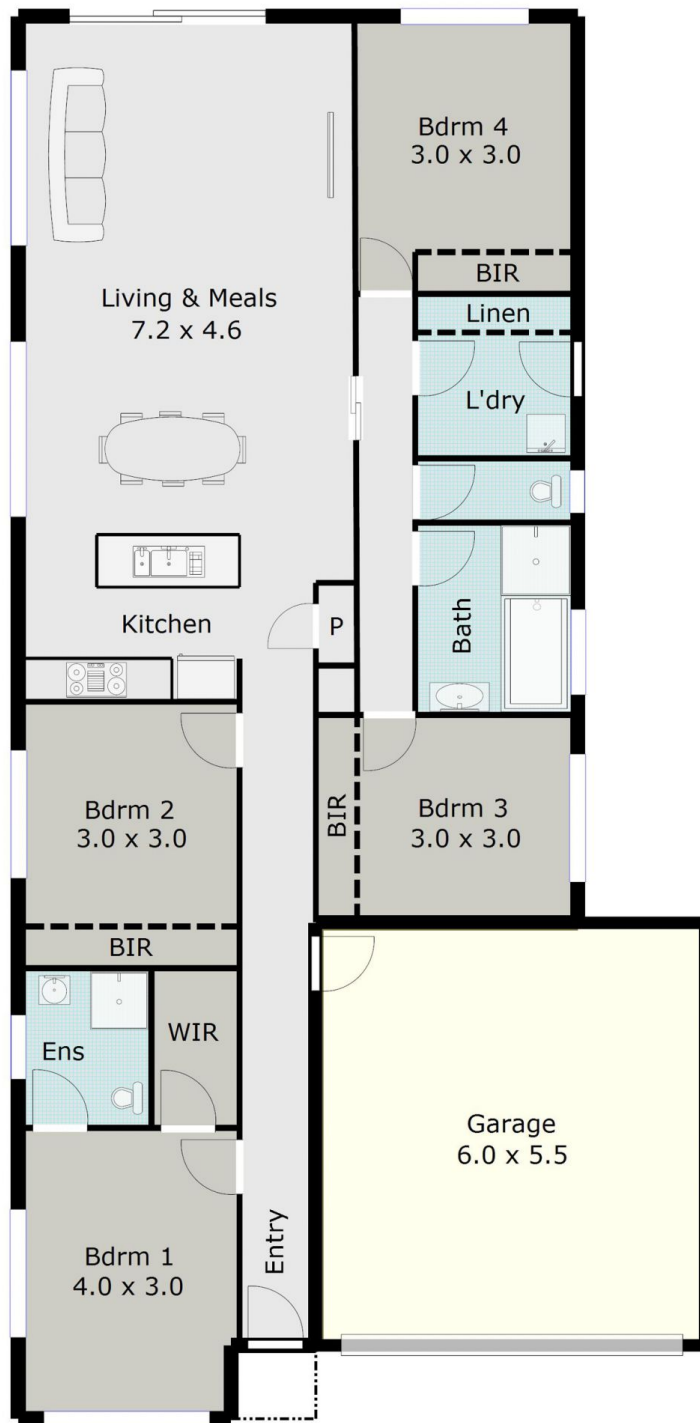


Leigh Hutchinson
03 5331 2000



Ian Moyle
03 5331 2000

TOTAL LIVING AREA: APPROX. 15.0 SQ



DISCLAIMER:

ALL DIMENSIONS ARE APPROXIMATE & NOT 100% TO SCALE.
FOR FURTHER INFORMATION, PLEASE CONTACT YOUR AGENT DIRECTLY.

