

#### 240 Elsworth Street Mount Pleasant VIC

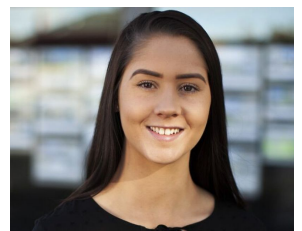
4 2 2

Perfectly positioned for easy access to University & Ballarat CBD is this wonderful home completed to exacting standards & offering all that is required for low maintenance living. The many features include walk in robe and ensuite to main bedroom, built in robes to remaining bedrooms, spacious open plan living, gas central heating & evaporative cooling, double lock up garage with remote & direct access, low maintenance landscaped front & rear yards. No Internal Smoking. Strictly No Animals. Inspection highly recommended. 12 Month Lease. INSPECTION BY APPOINTMENT ONLY. SHOULD YOU NOT REGISTER THE INSPECTION MAY NOT PROCEED.

**View :** <https://www.doepels.com.au/lease/vic/ballarat-western-district/mount-pleasant/residential/house/6187935>



**Scott Beames**  
03 5337 0066



**Eve Peters**