



301 Elsworth Street Mount Pleasant VIC

3 1 2

Ideal location with easy access to the Federation University campuses plus both Mount Helen and Ballarat CBD amenities. Overall this property will offer a strong investment return ideal for investors within the marketplace or make a quality property that will appeal to first home owners or downsizers. Easy access to shops, supermarkets, restaurants, cafes, public transport and freeway links. Comprising 3 bedrooms with built in robes, main bathroom with shower and separate bath, new carpets throughout, split system AC, central heating, open plan living zone, single carport plus a garage, under house storage space and low maintenance enclosed rear yard complete with a gazebo, all situated on 701m2 block. This property has instant appeal, a very low maintenance property or a secure investment option - current rental valuation at \$340pwk, call Leigh today

Price : \$ 360,000
Land Size : 701 sqm
View : <https://www.doepels.com.au/sale/vic/ballarat-western-district/mount-pleasant/residential/house/6187905>

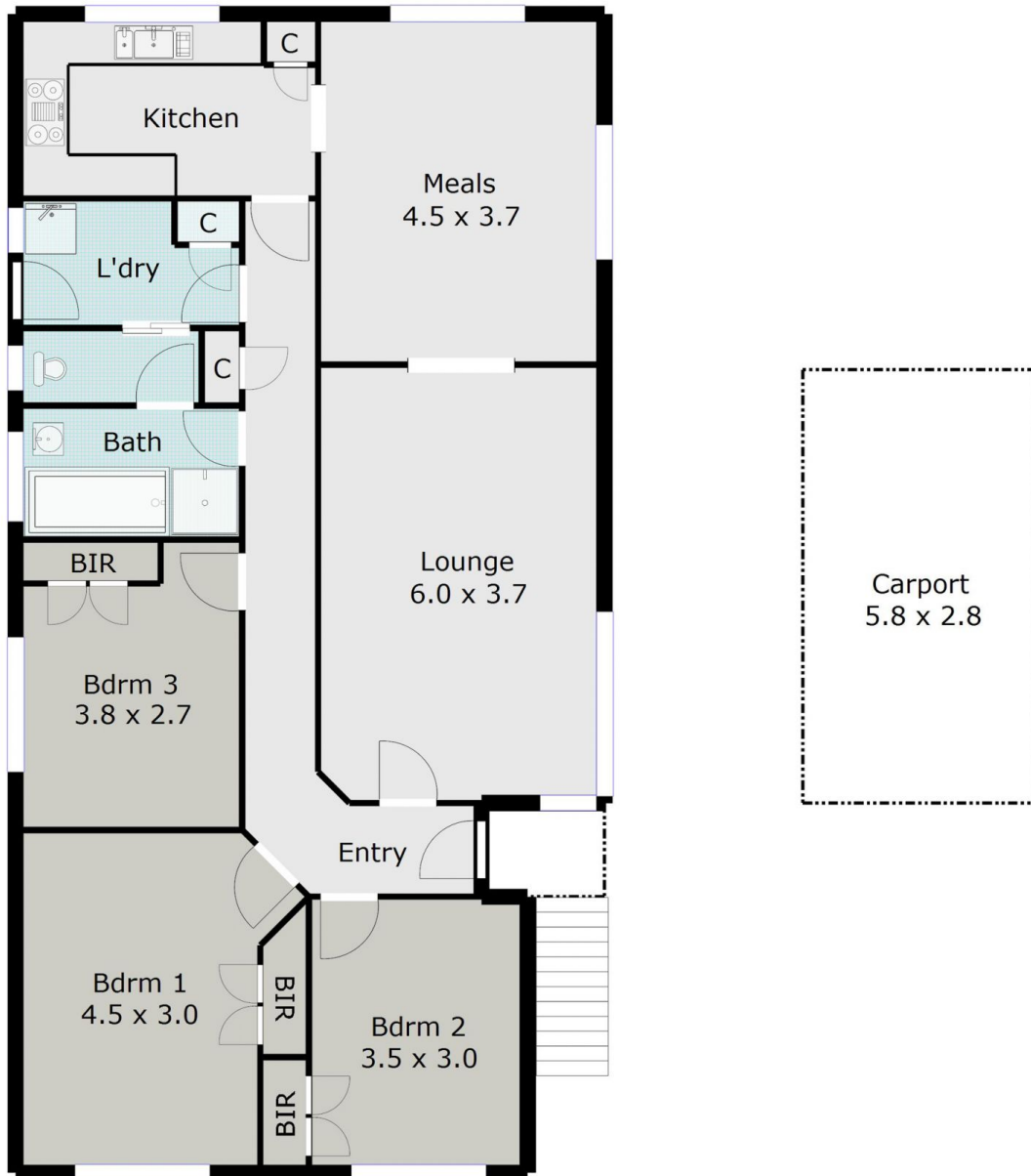


Leigh Hutchinson
03 5331 2000



Robert Cunningham
5337 0040

TOTAL LIVING AREA: APPROX. 13.2 SQ



DISCLAIMER:

ALL DIMENSIONS ARE APPROXIMATE & NOT 100% TO SCALE.
FOR FURTHER INFORMATION, PLEASE CONTACT YOUR AGENT DIRECTLY.

