



18 John Court Haddon VIC

3 2 16

Unique handmade mud brick house is filled with bespoke features lovingly made by the builder, this property is just what you are looking for! . Relax and enjoy this idyllic lifestyle - Unwind every time you arrive home!! The two storey house is set in a timbered 2.136ha (approx. 5 acres) with a large dam with several islands. Water lilies fill the dam and create a picturesque and peaceful aspect to this stunningly peaceful property which is only a short drive from Ballarat and is accessed by sealed roads. This mudbrick and weathertex home is built with beautiful exposed timbers, natural slate flooring, and asthma friendly finishes where possible. A magnificent jarrah staircase leads you upstairs to a second lounge room, 2 spacious bedrooms and a large shower room built for two! All these rooms have beautiful views over the dam. Downstairs you can sit at the hand made bar within the open plan space or enjoy the warmth of the attached solarium with grand views

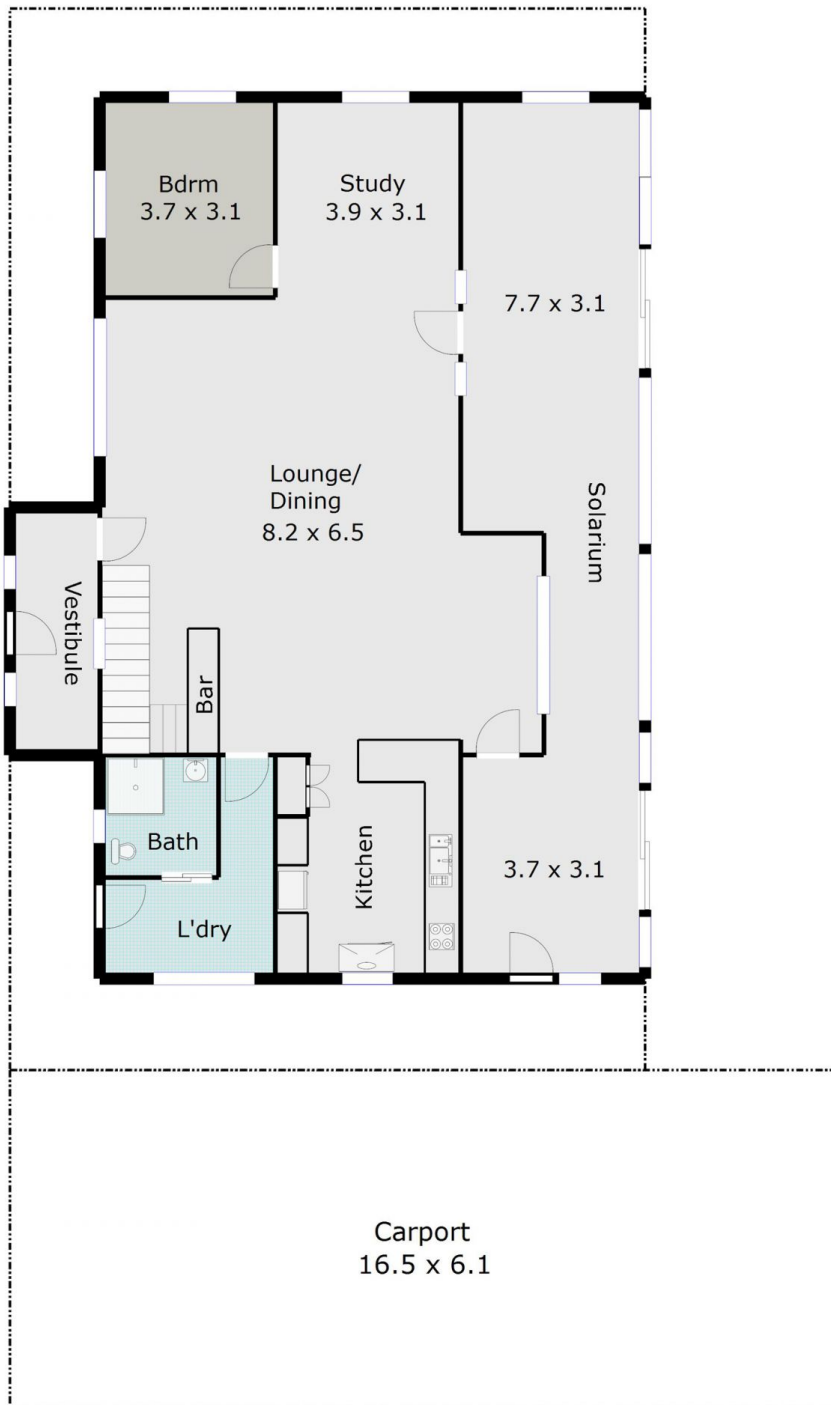
Price : \$ 565,000
Land Size : 5 Acres
View : <https://www.doepels.com.au/sale/vic/ballarat-western-district/haddon/residential/house/6187870>



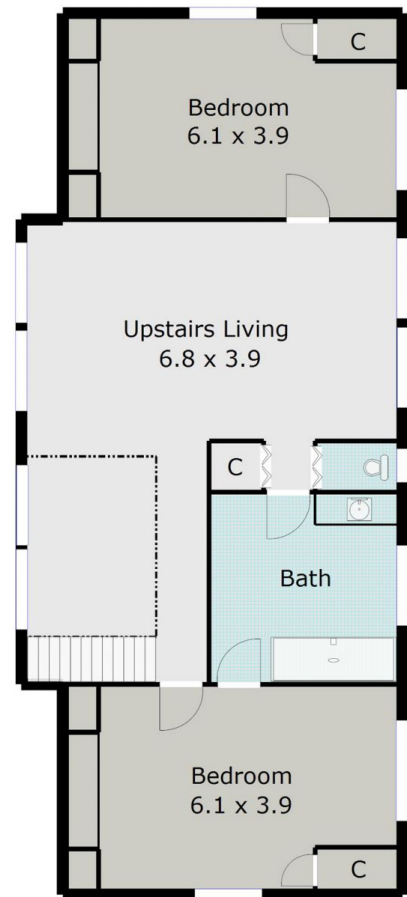
John Morris
03 5331 2000

TOTAL LIVING AREA: APPROX. 27.2 SQ

GROUND FLOOR



TOP FLOOR



DISCLAIMER:

ALL DIMENSIONS ARE APPROXIMATE & NOT 100% TO SCALE.
FOR FURTHER INFORMATION, PLEASE CONTACT YOUR AGENT DIRECTLY.

