



406 Havelock Street Black Hill VIC

5 2 2

Capturing the essence of Ballarat central living being only an 800m walk to the CBD! This immaculate property has every convenience you could need in the highly sought after suburb of Black Hill, and with park/playground directly next door a huge bonus for young families. Enjoy Ballarat's fine eateries and shopping, plus public transport including train station, Black Hill primary school, Post Office & Hotel all located within minutes. This very stylish, 2 story home blends the old, modern and contemporary well and offers up to 6 bedrooms/study or perhaps a 'work from home office'. The greatest surprise is the private master suite upstairs with ensuite and parents retreat. A fantastic 3 living areas in total, open plan kitchen meals area that is light filled opening out onto the undercover veranda and outdoor entertaining space. All set on 1432m2 allotment, this exceptional opportunity offers room for the growing family inside and out, lock up garage, plus shedding for the

Price : \$ 610,000
Land Size : 1432 sqm
View : <https://www.doepels.com.au/sale/vic/ballarat-western-district/black-hill/residential/house/6187838>

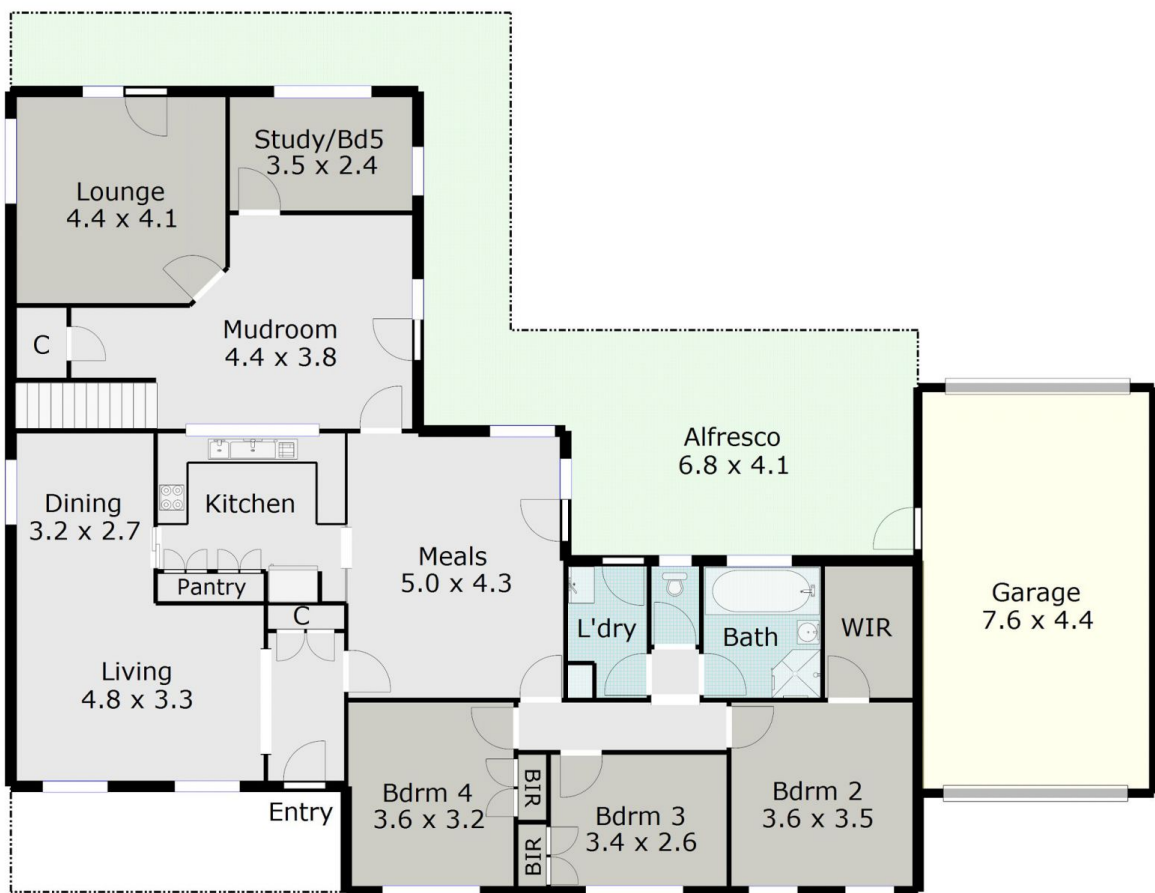
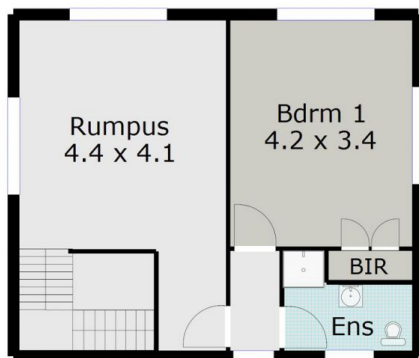


Tony Lockyer
03 5331 2000



John Morris
03 5331 2000

TOTAL LIVING AREA: APPROX. 23.8 SQ



DISCLAIMER:

ALL DIMENSIONS ARE APPROXIMATE & NOT 100% TO SCALE.
FOR FURTHER INFORMATION, PLEASE CONTACT YOUR AGENT DIRECTLY.

