



## 12 Fairway Court Invermay Park VIC

4 2 2

With a shift in demand for extra space both inside and outside, this home situated adjacent to the Midlands Gold Course offers families a change in lifestyle. Situated on the first fairway, the convenience of only minutes into the CBD and freeway access and with shopping and schools nearby, the location alone will command your attention.

A special one-off family home superbly designed and maintained will provide you with space and comfort. In the lower level there are quality furnishings and neutral tones throughout the home highlighting the black butt flooring that runs through the formal entry into the open spacious kitchen dining and living room. An outlook from these rooms captures the landscaped gardens and Golf Course. Separate is a formal lounge and playroom. There is direct access from Double garage to laundry and powder room. Upstairs are four bedrooms, ensuite and main bathroom,

**Land Size** : 1026 sqm

**View** : <https://www.doepels.com.au/sale/vic/ballarat-western-district/invermay-park/residential/house/6187824>



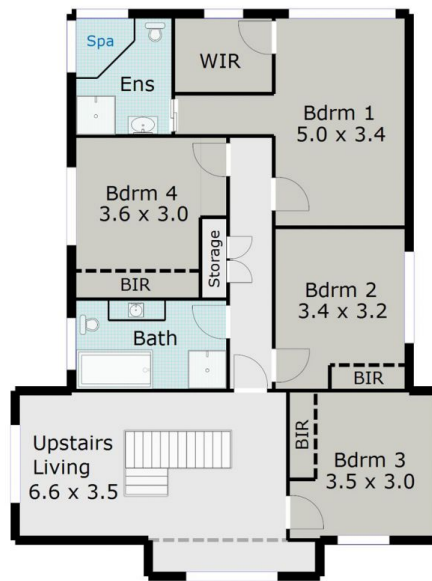
**Robert Cunningham**  
5337 0040



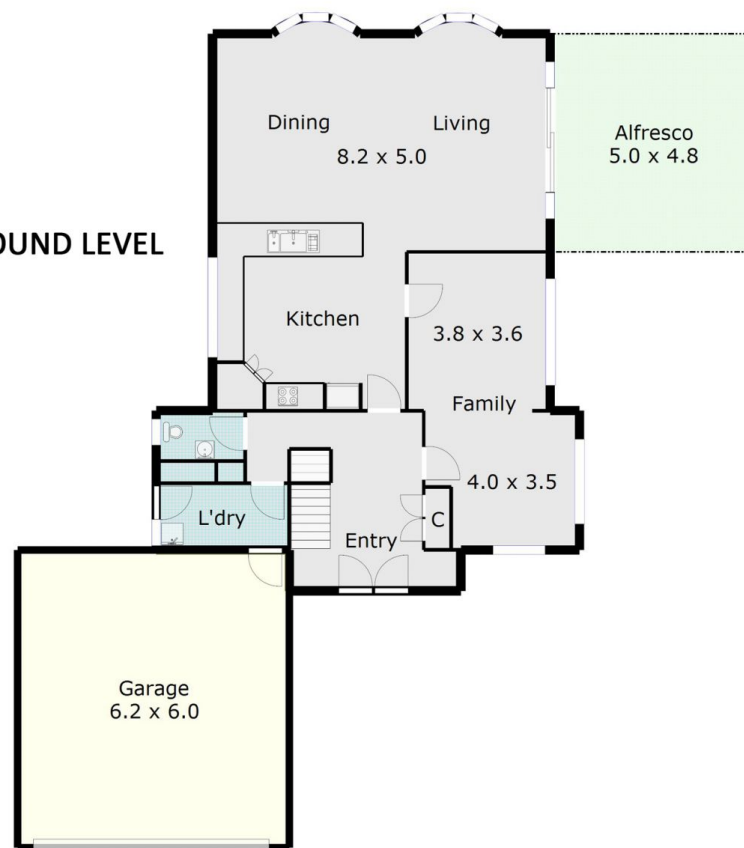
**John Morris**  
03 5331 2000

TOTAL LIVING AREA: APPROX. 23.6 SQ

### TOP FLOOR



### GROUND LEVEL



DISCLAIMER:

ALL DIMENSIONS ARE APPROXIMATE & NOT 100% TO SCALE.  
FOR FURTHER INFORMATION, PLEASE CONTACT YOUR AGENT DIRECTLY.

