



80 Dorset Drive Alfredton VIC

4 2 2

Positioned in a high profile Alfredton area you will find this light-filled 26sqm home comprising four spacious bedrooms. Master with WIR and BIRs to others and two bathrooms, the ensuite complete with a double vanity. Family living area is an open plan design that offers side and rear access to the garden and a large, centrally located second living space offers flexibility. Kitchen with stone benchtops and island bench will add to the appeal, plus the bonus of ample bench space, deep drawers, large fridge space, stainless steel appliances and 900mm stove. The plumbed butler's pantry tucked in behind the kitchen is sure to delight, as is the handy built-in storage located in the home's central hallway.

A hidden study nook near the bedrooms, complete with storage cupboard, ticks another box for families. Additional features to note are LED downlights, ducted heating throughout and split system air conditioning, double

Land Size : 448 sqm

View : <https://www.doepels.com.au/sale/vic/ballarat-western-district/alfredton/residential/house/6187795>

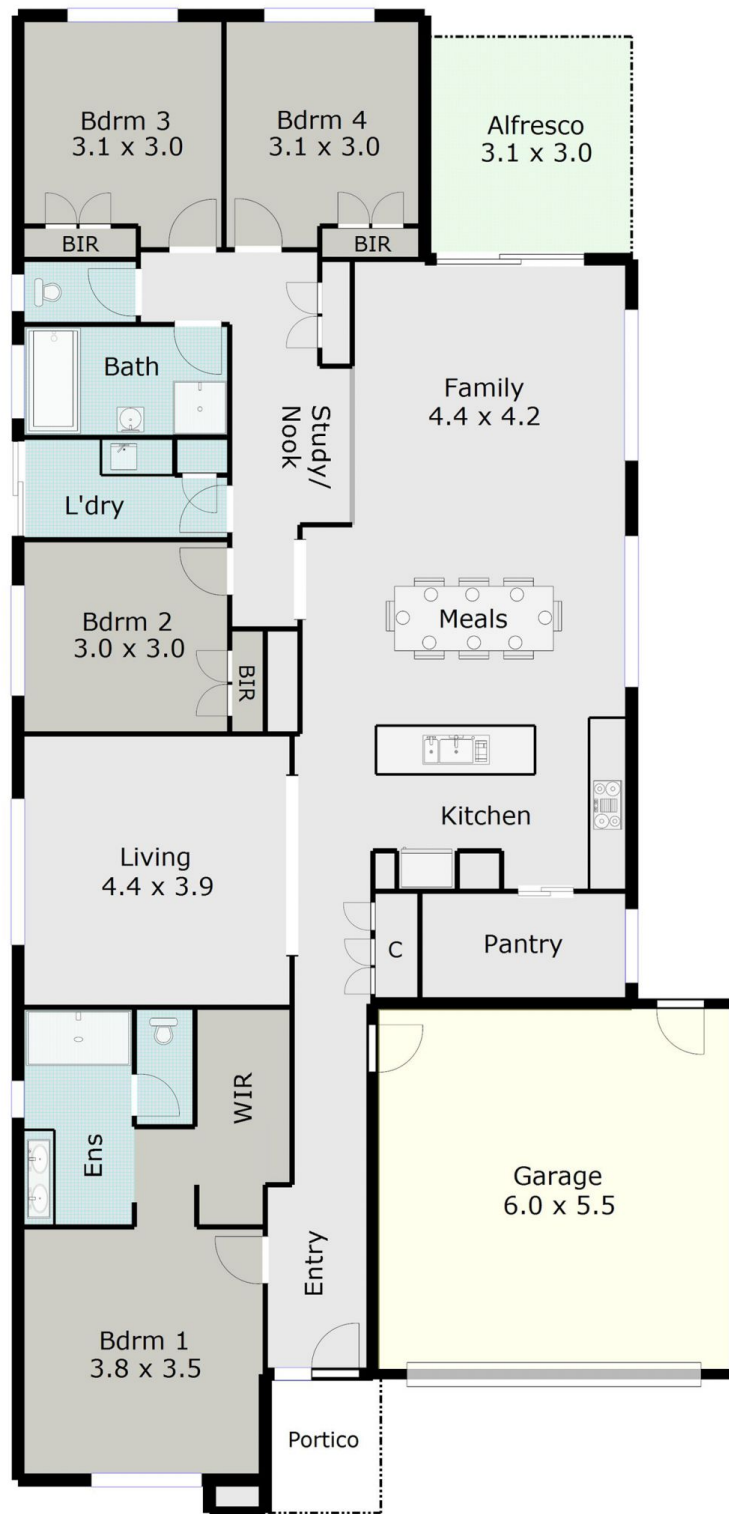


Leigh Hutchinson
03 5331 2000



Ian Moyle
03 5331 2000

TOTAL LIVING AREA: APPROX. 20.5 SQ



DISCLAIMER:

ALL DIMENSIONS ARE APPROXIMATE & NOT 100% TO SCALE.
FOR FURTHER INFORMATION, PLEASE CONTACT YOUR AGENT DIRECTLY.

