



### 15 Marina Drive Mount Clear VIC

3 1 2

There is a surprise around every corner in this architecturally designed elevated family home. Perfectly set up for young family with native gardens all set on 946m2. The double garage provides direct access inside via internal timber stair case. At the top you are welcomed by three bedrooms, main with large walk in robes with a peaceful and relaxed outlook. Formal dining area could double as a sitting room and then into the main hub of the home. Kitchen and the large open lounge with raked ceiling which is adjacent to the rear deck. Gas central heating, 2 x split systems and continuous HWS. A private yard requires minimal upkeep. This is a pleasure to inspect all year round.

**Land Size** : 964 sqm  
**View** : <https://www.doepels.com.au/sale/vic/ballarat-western-district/mount-clear/residential/home/6187791>

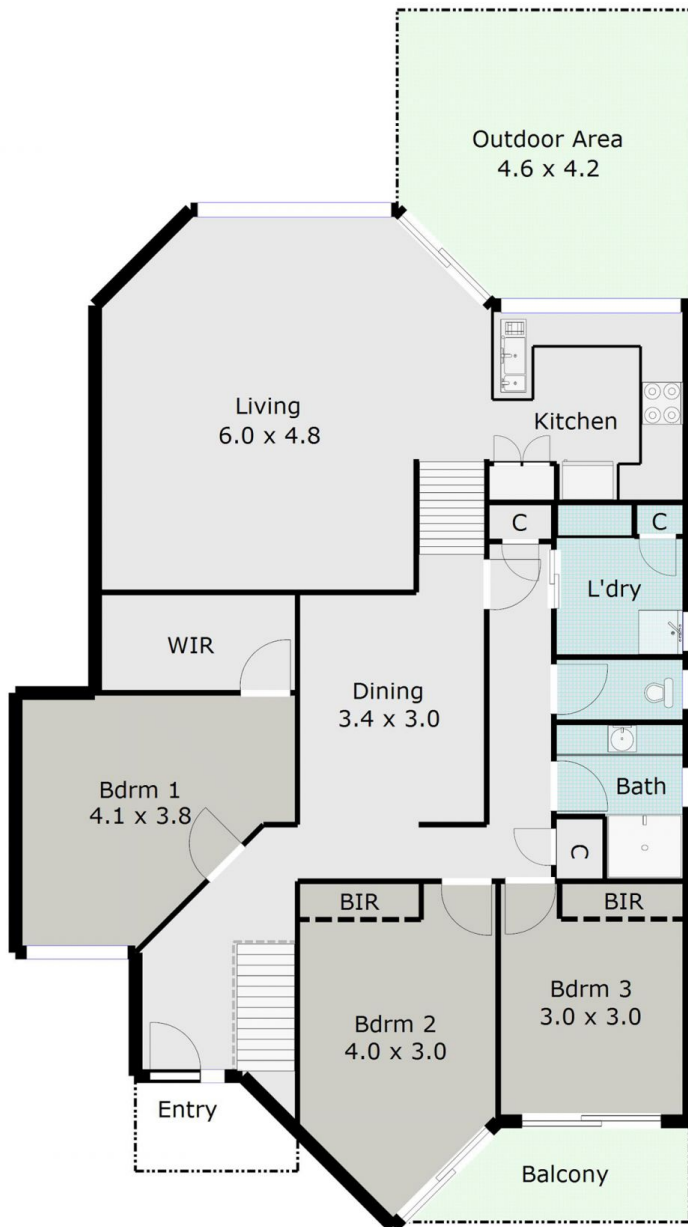


**Robert Cunningham**  
5337 0040

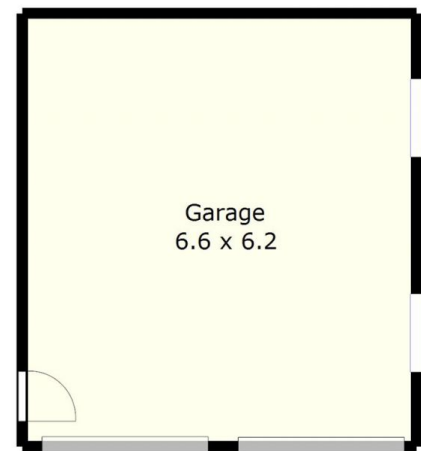


**Tony Lockyer**  
03 5331 2000

TOTAL LIVING AREA: APPROX. 14.3 SQ



(LOWER LEVEL)



DISCLAIMER:

ALL DIMENSIONS ARE APPROXIMATE & NOT 100% TO SCALE.  
FOR FURTHER INFORMATION, PLEASE CONTACT YOUR AGENT DIRECTLY.

