

1229 Norman Street Wendouree VIC

2 1 2

Located just seconds from Wendouree Village, Wendouree Train Station and minutes from Lake Wendouree, this entry level first home or investment property will excite buyers. On 699m² block of land, with access on both sides offers the development buyer scope to subdivide at the rear (STCA). The home itself features 2 bedrooms, living kitchen / meals and bathroom and is in great condition throughout. An air conditioner and heater provide comfort all year round. Properties at this price level do not last long, call today to book your inspection.

Land Size : 699 sqm
View : <https://www.doepels.com.au/sale/vic/ballarat-western-district/wendouree/residential/house/6187776>

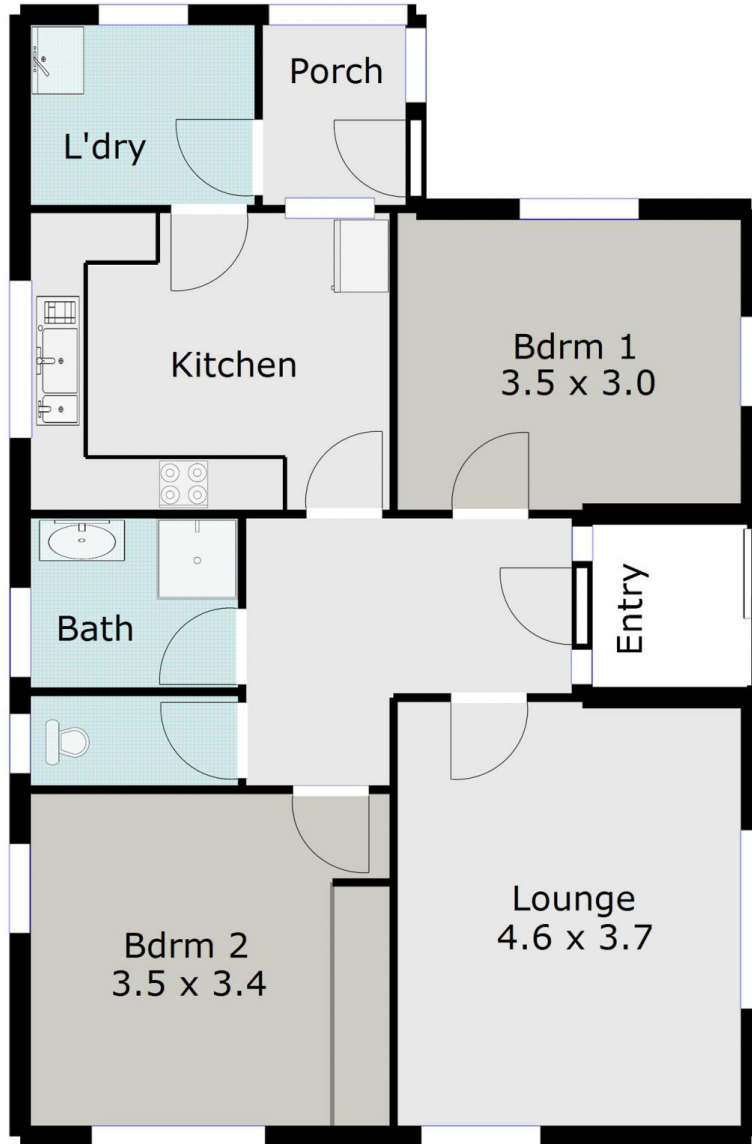


Tony Lockyer
03 5331 2000



John Morris
03 5331 2000

TOTAL LIVING AREA: APPROX. 8.6 SQ



DISCLAIMER:

ALL DIMENSIONS ARE APPROXIMATE & NOT 100% TO SCALE.
FOR FURTHER INFORMATION, PLEASE CONTACT YOUR AGENT DIRECTLY.

