



20 James Drive Delacombe VIC

4 2 2

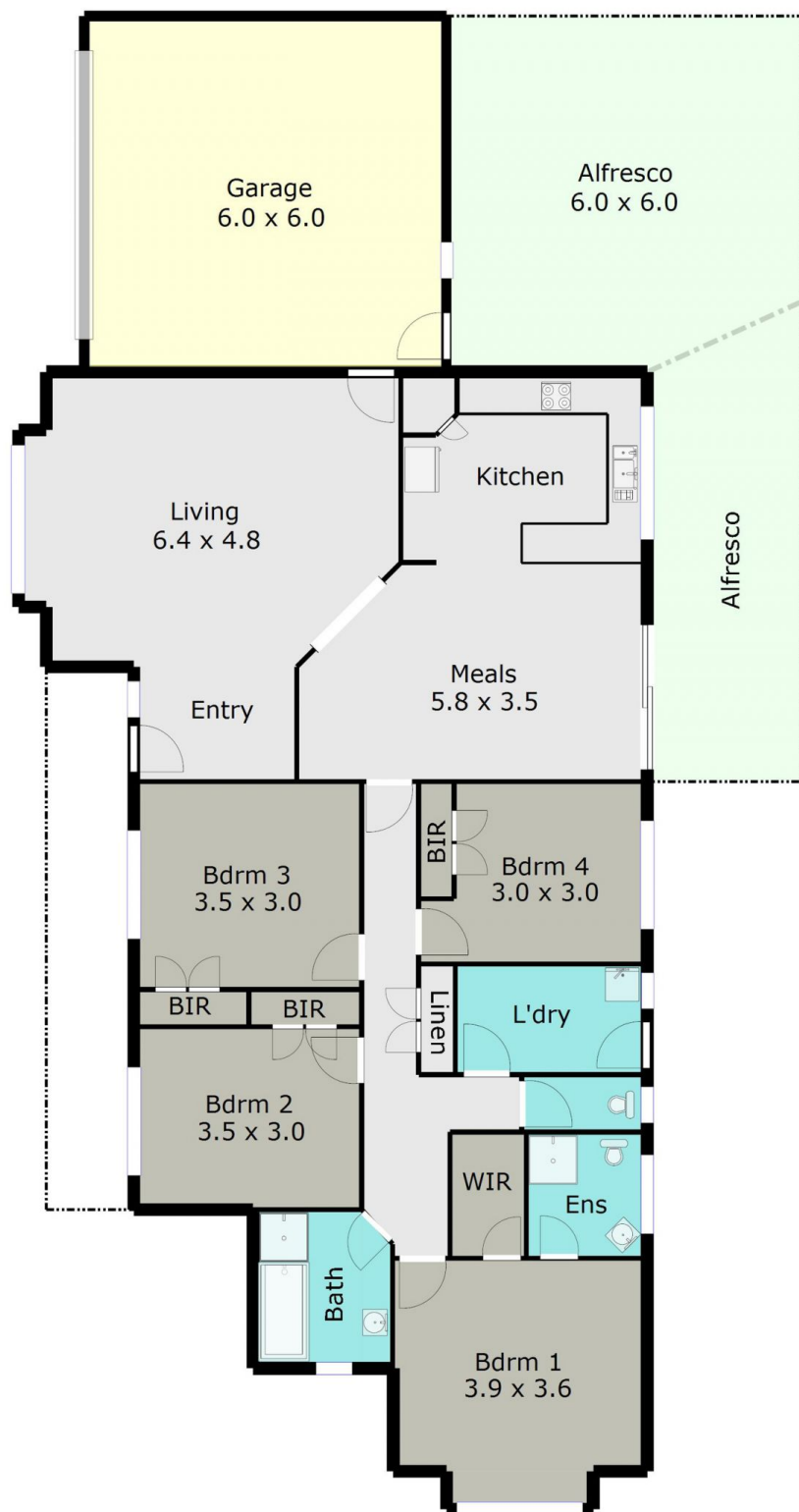
A lovely home in prime position close to schools and the new Delacombe Town Centre. A great corner block provides access for caravan, boat, motor home etc and is app 735sqm in size. Double garage, large alfresco, and lots of space inside. 4 generous bedrooms, ensuite and walk in robe to main, built ins to others, spacious kitchen family, and large lounge. Gas ducted heating throughout, tasteful décor and excellent condition. Solar panels to assist with electricity costs, space to grow your own vegetables if you wish or for additional shedding. Be quick to inspect this entry-level Delacombe home today.

Land Size : 735 sqm
View : <https://www.doepels.com.au/sale/vic/ballarat-western-district/delacombe/residential/house/6187744>



John Morris
03 5331 2000

TOTAL LIVING AREA: APPROX. 17.45SQ



DISCLAIMER:

ALL DIMENSIONS ARE APPROXIMATE & NOT 100% TO SCALE.
FOR FURTHER INFORMATION, PLEASE CONTACT YOUR AGENT DIRECTLY.

