



14 Pisgah Street Ballarat Central VIC

3 1 2

Fantastic development opportunity exists on this large allotment of approx. 1449sqm in the much sought after Lake Wendouree precinct, just minutes from the CBD, a short stroll to Lake Wendouree and shopping amenities. Build your dream home or renovate the already existing weatherboard home which offers 3 bedrooms with built in robes, a good size kitchen with plenty of storage, a covered outdoor entertaining area and large shed. A property that you can explore many options with or simply secure a development site with huge potential and maximise all it has to offer! Properties like this, in this location are a rare find!

Land Size : 1449 sqm

View : <https://www.doepels.com.au/sale/vic/ballarat-western-district/ballarat-central/residential/house/6187696>

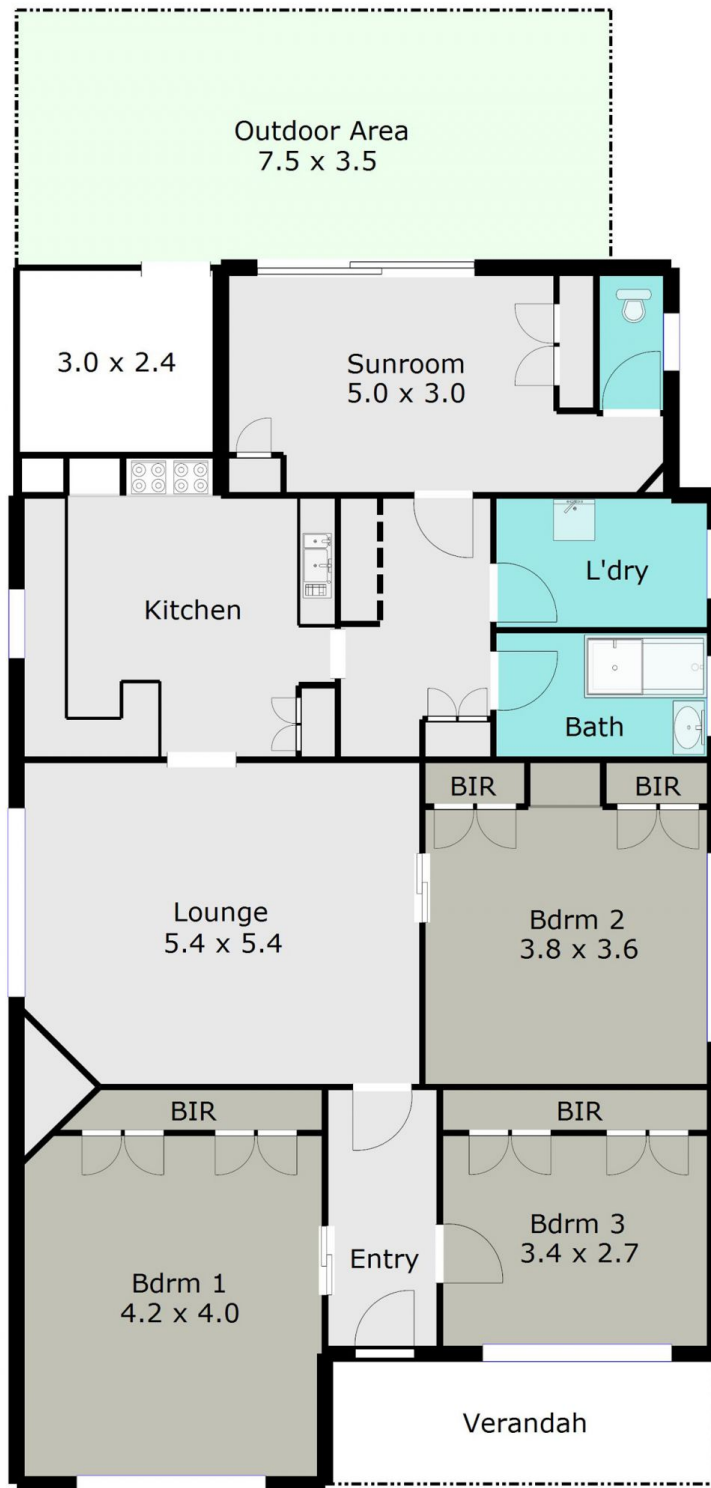


Leigh Hutchinson
03 5331 2000



Ian Moyle
03 5331 2000

TOTAL LIVING AREA: APPROX. 14.4 SQ



DISCLAIMER:

ALL DIMENSIONS ARE APPROXIMATE & NOT 100% TO SCALE.
FOR FURTHER INFORMATION, PLEASE CONTACT YOUR AGENT DIRECTLY.

