



1/827 Humffray Street South Mount Pleasant VIC

2  **1**  **1** 

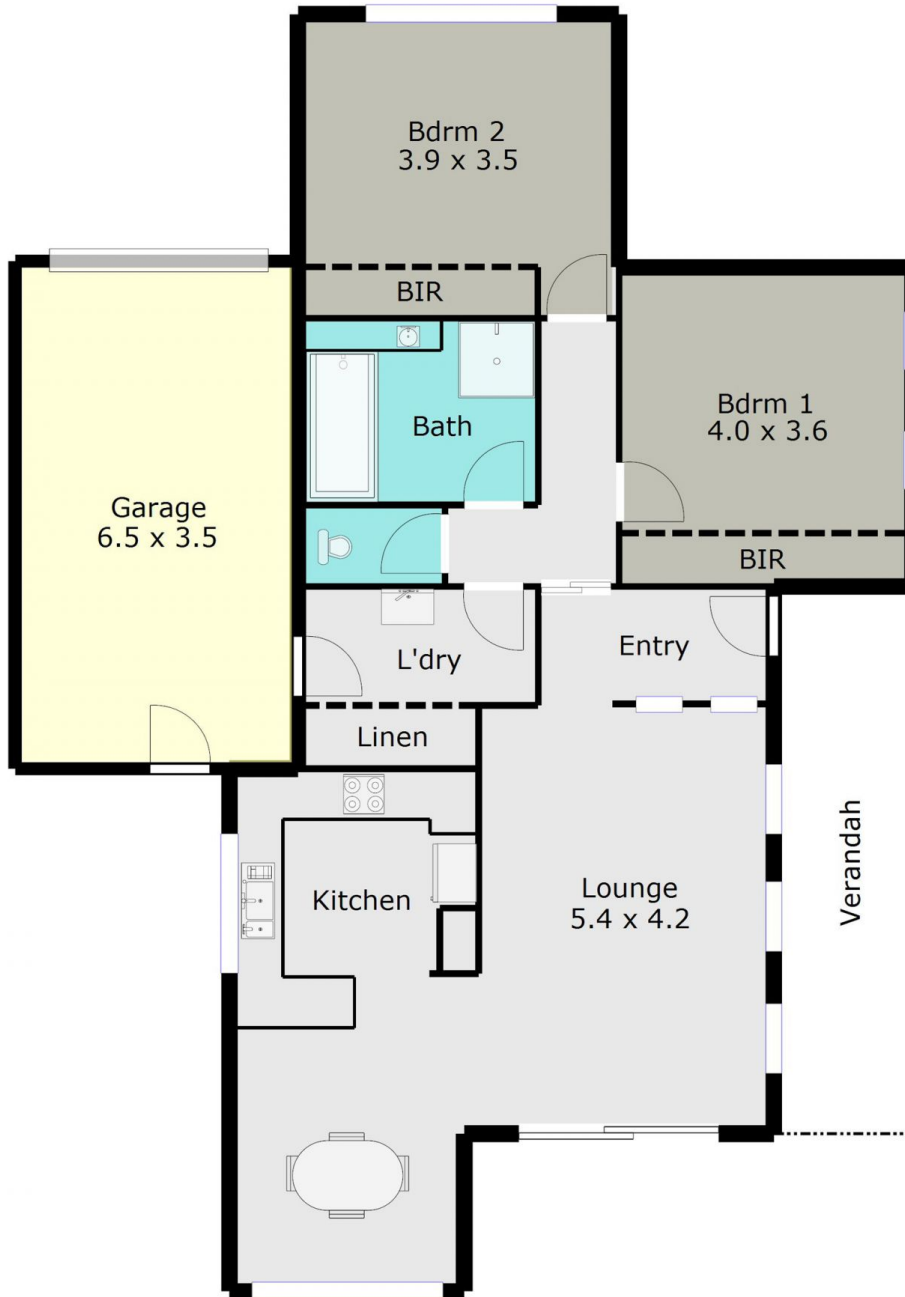
This well presented 2 bedroom brick veneer property will suit investors, first home buyers or those looking to downsize and is located only minutes from the CBD. Enter through the front door into a small partitioned foyer that leads into a large family area, separate dining room and kitchen fitted with stainless steel appliances, the neutral décor throughout will please. Features include gas central heating, instant gas hot water plus a good size bathroom. The 2 spacious bedrooms are fitted with large built in robes. A good size yard with easy access, single lock up garage and a garden shed all on a block size of 452sqm. Currently tenanted on a periodic lease for \$270 per week, this could be the perfect investment property you've been looking for. Spacious units in great locations like this don't last long, so get in quick and inspect today!

Land Size : 452 sqm
View : <https://www.doepels.com.au/sale/vic/ballarat-western-district/mount-pleasant/residential/unit/6187662>



Leigh Hutchinson
03 5331 2000

TOTAL LIVING AREA: APPROX. 11.3 SQ



DISCLAIMER:

ALL DIMENSIONS ARE APPROXIMATE & NOT 100% TO SCALE.
FOR FURTHER INFORMATION, PLEASE CONTACT YOUR AGENT DIRECTLY.

