



### 1/3 Eagle Court Invermay Park VIC

3 2 2

A fantastic opportunity to purchase in the sought after area of Invermay Park. This beautifully presented home offers 3 bedrooms with WIR and ensuite to master. With a stylish modern kitchen overlooking the meals, lounge and family area and a well-presented modern family bathroom, this home is sure to impress. Extra features also offer gas central heating, split system air conditioning and a double lock-up garage, fully functional laundry room and an enclosed private low maintenance outdoor area. This home is perfectly located within walking distance to Northway Shopping Centre and only a short stroll to Midlands Golf Club, this stunning home is ideal for the golf enthusiast, retiree or investor.

**Land Size** : 348 sqm

**View** : <https://www.doepels.com.au/sale/vic/ballarat-western-district/invermay-park/residential/house/6187597>

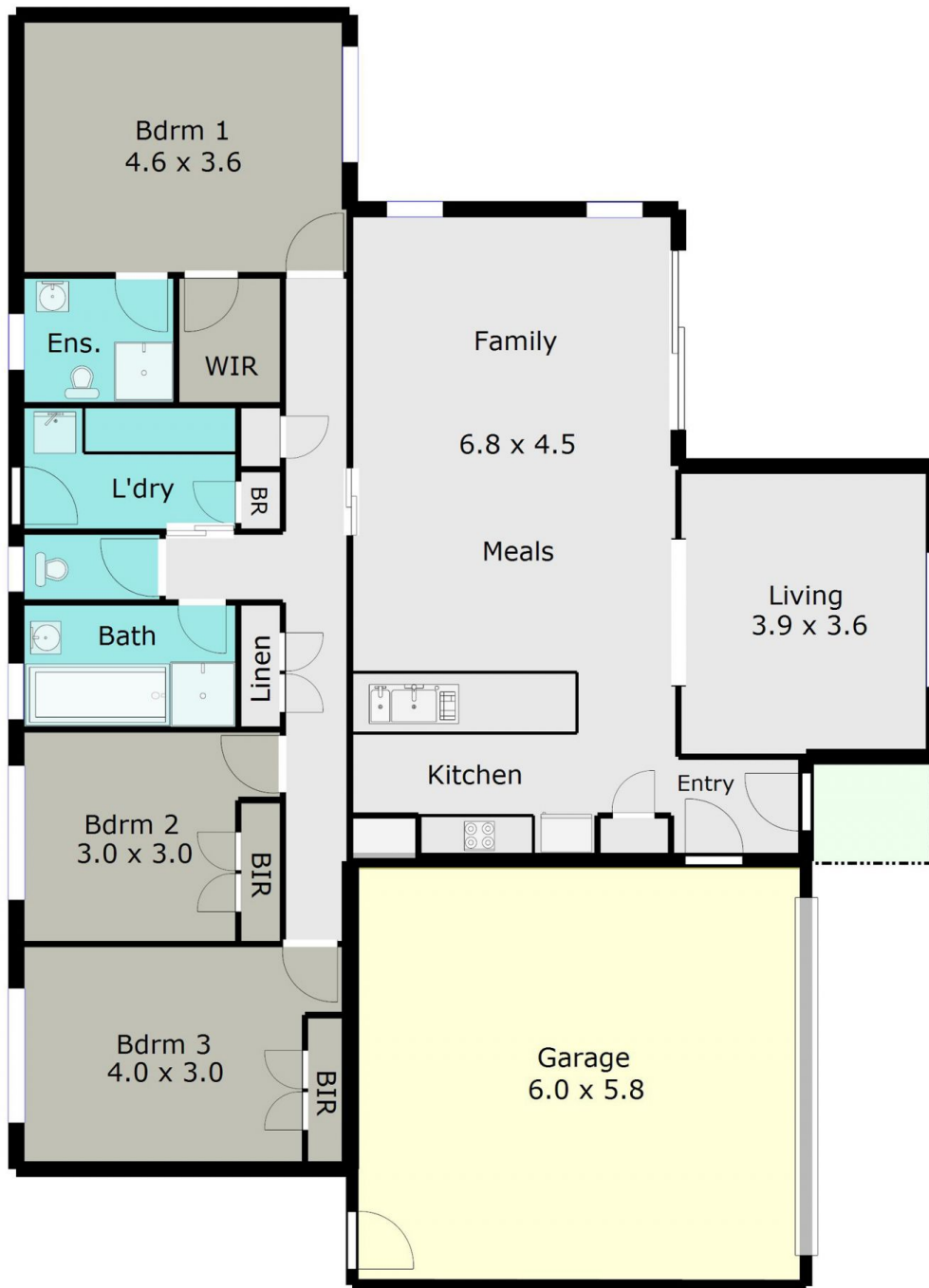


**Leigh Hutchinson**  
03 5331 2000



**Ian Moyle**  
03 5331 2000

TOTAL LIVING AREA: APPROX. 15.9 SQ



DISCLAIMER:

ALL DIMENSIONS ARE APPROXIMATE & NOT 100% TO SCALE.  
FOR FURTHER INFORMATION, PLEASE CONTACT YOUR AGENT DIRECTLY.

