



599 Post Office Road Ross Creek VIC

5 2 4

Sitting at the peak of Ross Creek with fantastic views back across Ballarat and surrounding district is this stunning home on approximately 24 acres. Built with Mount Gamier Limestone this home stands out from the crowd and needs to be inspected to fully appreciate the lovely design and what it has to offer. This amazing house will suit the largest of families with its generous room sizes, comprising 5 oversized bedrooms, downstairs you have a master with walk in robe and ensuite and upstairs you will find four bedrooms along with the main bathroom. Central living quarters include formal lounge, formal dining, open plan kitchen and family room that capture the breathtaking views. Also included in this home are a large study, feature wood heater to the family room, double garage and double carport, large swimming pool and a porch surrounding the home. The added bonuses to this fantastic lifestyle property are by way of the huge variety of shedding

Land Size : 24 Acres

View : <https://www.doepels.com.au/sale/vic/ballarat-western-district/ross-creek/residential/house/6187584>

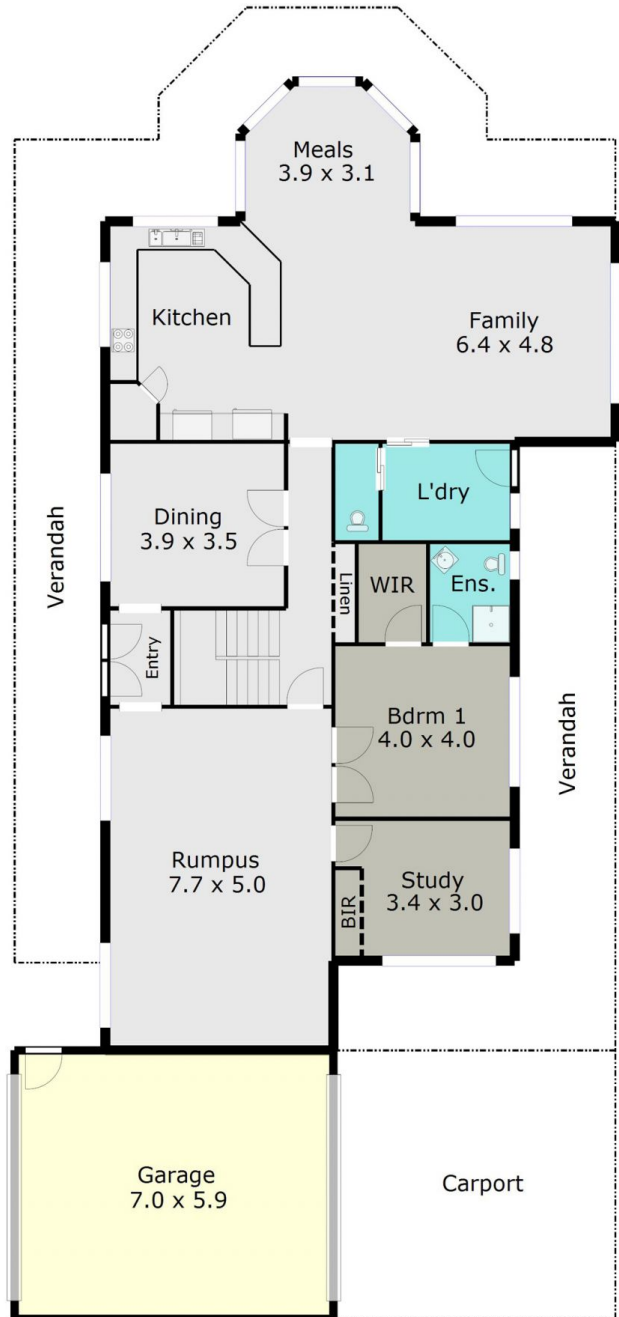
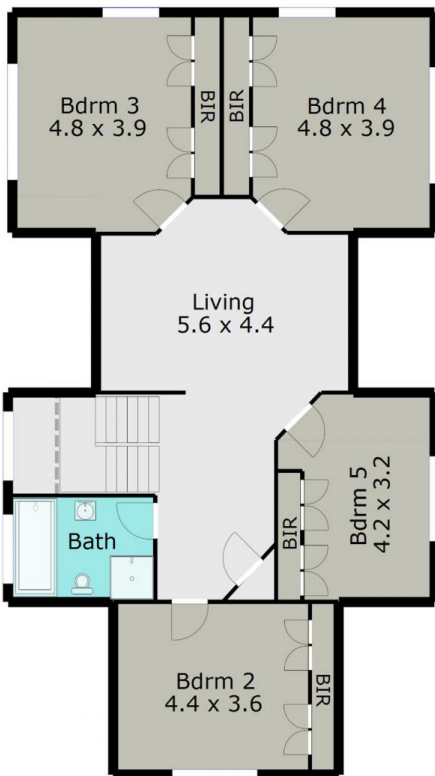


Leigh Hutchinson
03 5331 2000

TOTAL LIVING AREA: APPROX. 32.1 SQ

GROUND FLOOR

TOP LEVEL



DISCLAIMER:

ALL DIMENSIONS ARE APPROXIMATE & NOT 100% TO SCALE.
FOR FURTHER INFORMATION, PLEASE CONTACT YOUR AGENT DIRECTLY.

