



13 Moyle Street Ballarat Central VIC

3 1 2

Simple elegance is the centre feature of this Victorian home, combined with recent renovation that enhances the appeal, buyers will appreciate both the indoor and outdoor space. Set behind a wonderful white picket fence, the home's charming timber facade makes for an inviting first impression. Inside a spacious layout graced with a neutral colour palette, modern kitchen with gas cooking, dishwasher and dining nook that provides a casual space for day-to-day living. Contemporary décor light pendants complement the home throughout, all new floor coverings, gas heating, split system and updated bathroom. Three bedrooms, one with built in robes/cupboards. Inside is an euro laundry to the rear of the property and outside separate laundry/ wet room that could be converted into office space/storage, whatever suits your needs. All landscaping done, lovely outdoor paved area to enjoy the sun plus a rear double lock up garage with rear lane

Land Size : 443 sqm
View : <https://www.doepels.com.au/sale/vic/ballarat-western-district/ballarat-central/residential/house/6187544>

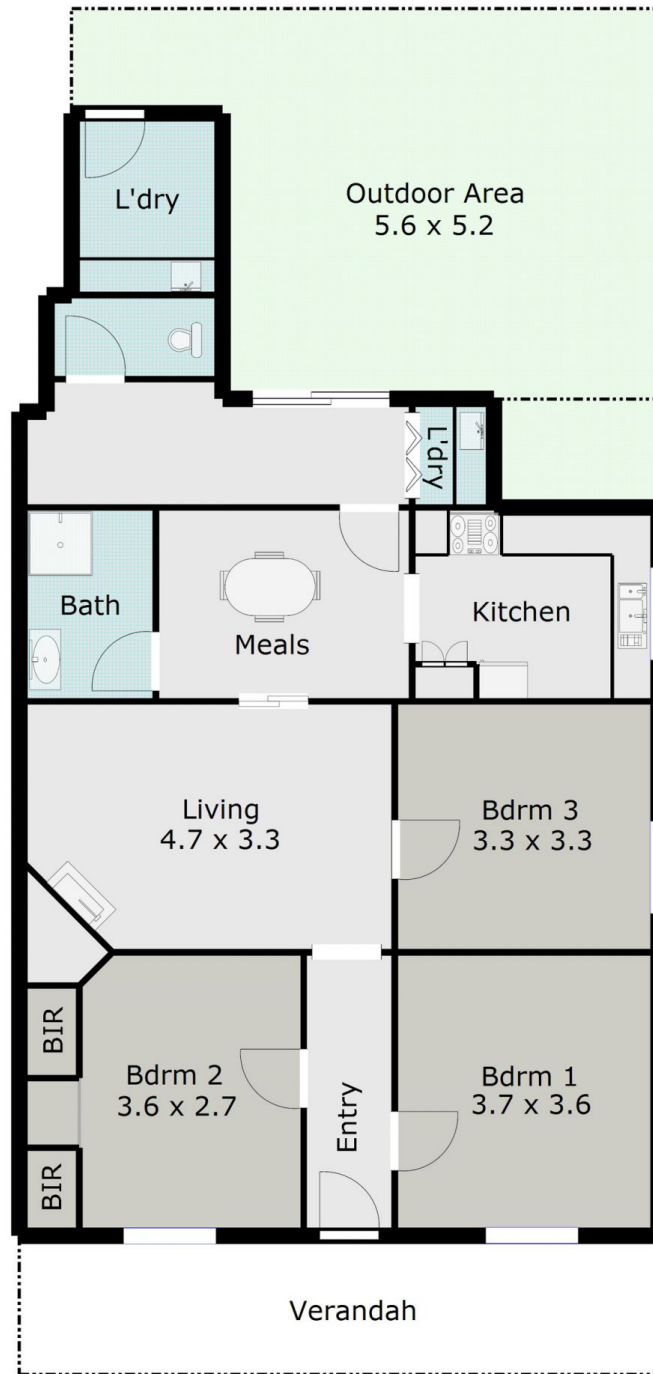


Leigh Hutchinson
03 5331 2000



Ian Moyle
03 5331 2000

TOTAL LIVING AREA: APPROX. 10.9 SQ



DISCLAIMER:

ALL DIMENSIONS ARE APPROXIMATE & NOT 100% TO SCALE.
FOR FURTHER INFORMATION, PLEASE CONTACT YOUR AGENT DIRECTLY.

