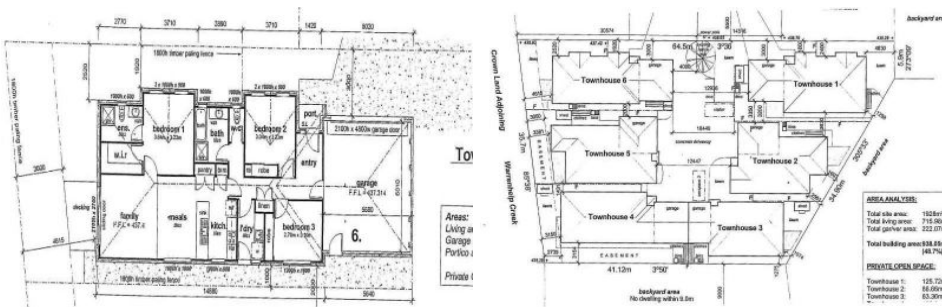




Townhouse 6



6/Lot 9 Sheehan Court BALLARAT EAST VIC

3 2 2

Over 16 squares and offering 3 bedrooms, bathroom, kitchen and meals and family area opening to timber decking.

Includes ducted heating, stainless steel appliances, carpets, ceramic tiles, light fittings, blinds, single garage with remote, fencing, driveways, paths, flywire screens and doors, window locks and 2500 water tank.

Not a thing to do-just choose your colour scheme and move straight in.

Close to the Eureka Stockade, public transport, shops, golf course, schools and colleges.

Buy now and save on stamp duty.

View : <https://www.doepels.com.au/sale/vic/ballarat-western-district/ballarat-east/residential/townhouse/6187036>