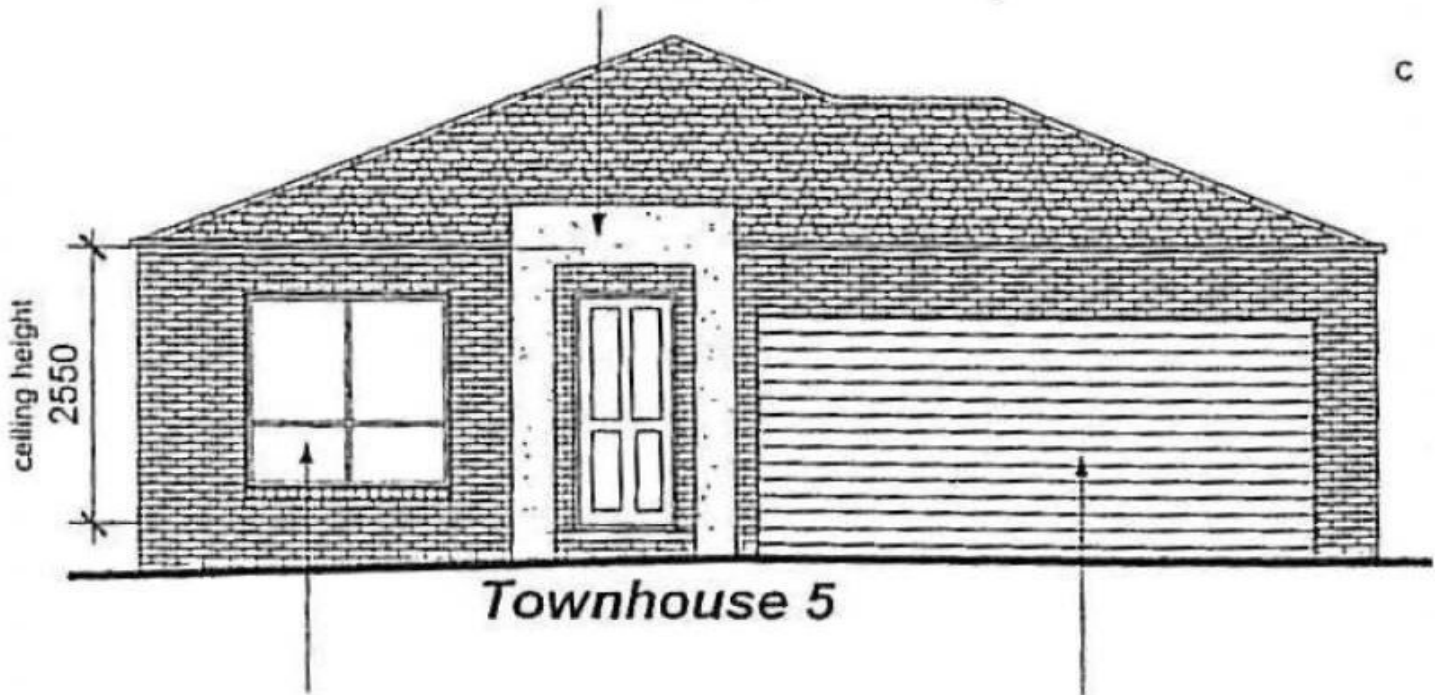
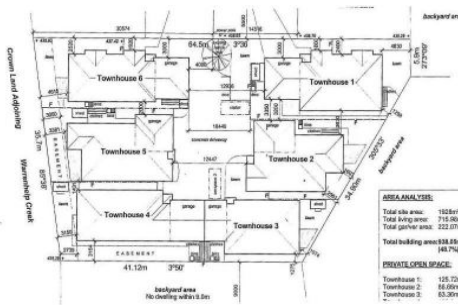
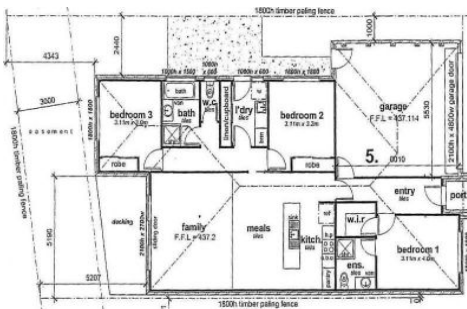


feature rendered parapet



aluminium framed windows

2100h x 4800w garage door



5/Lot 9 Sheehan Court BALLARAT EAST VIC

3 2 2

Over 16 squares and offering 3 bedrooms, ensuite, walk in robe, bathroom, kitchen, meals and family opening to outdoor timber decking.

Includes ducted heating, stainless steel appliances, carpets, ceramic tiles, light fittings, blinds, double garage with remote, fencing, driveways, paths, flywire screens and doors, window locks and 2500 water tank.

Not a thing to do just choose your colour scheme and move straight in.

Close to the Eureka Stockade, public transport, shops, golf course, schools and colleges.

**View :** <https://www.doepels.com.au/sale/vic/ballarat-western-district/ballarat-east/residential/townhouse/6187035>